

WWW.DUAL.DE

# DUAL PRIMUS MAXIMUS

MANUAL REFERENCE-TURNTABLE



## DUAL PRIMUS MAXIMUS

### MANUAL REFERENCE-TURNTABLE

The Primus Maximus is a special, limited edition reference model of which, only 100 units will be handmade to order in Germany.

This flagship model is a showpiece for the best technologies used throughout the history of the Dual company, refining them and carrying them forward into the 21<sup>st</sup> century.

These key Dual features include:

**The twin gimbal tonearm, spring loaded tracking force and direct-drive**

The overall result is an understated, high-tech turntable, providing a superb musical experience.



Dual

PRIMUS MAXIMUS



---

## PLINTH

ALUMINIUM / SOLID MDF

Each unique unit is created individually and the plinth is finished with real wood veneers. The critical components, such as motor, platter and arm are fixed to a 10mm thick aluminium base plate. The heavy top and base plates are connected to minimise vibration.

---

## PLATTER

### SOLID ALUMINIUM

The heavy platter, weighing 2.7kg, is machined from a solid block of aluminium and refined with a blasted and eloxated surface finish. The platter weight is exactly matched to the motor regulation in order to reduce wow and flutter to an absolute minimum.



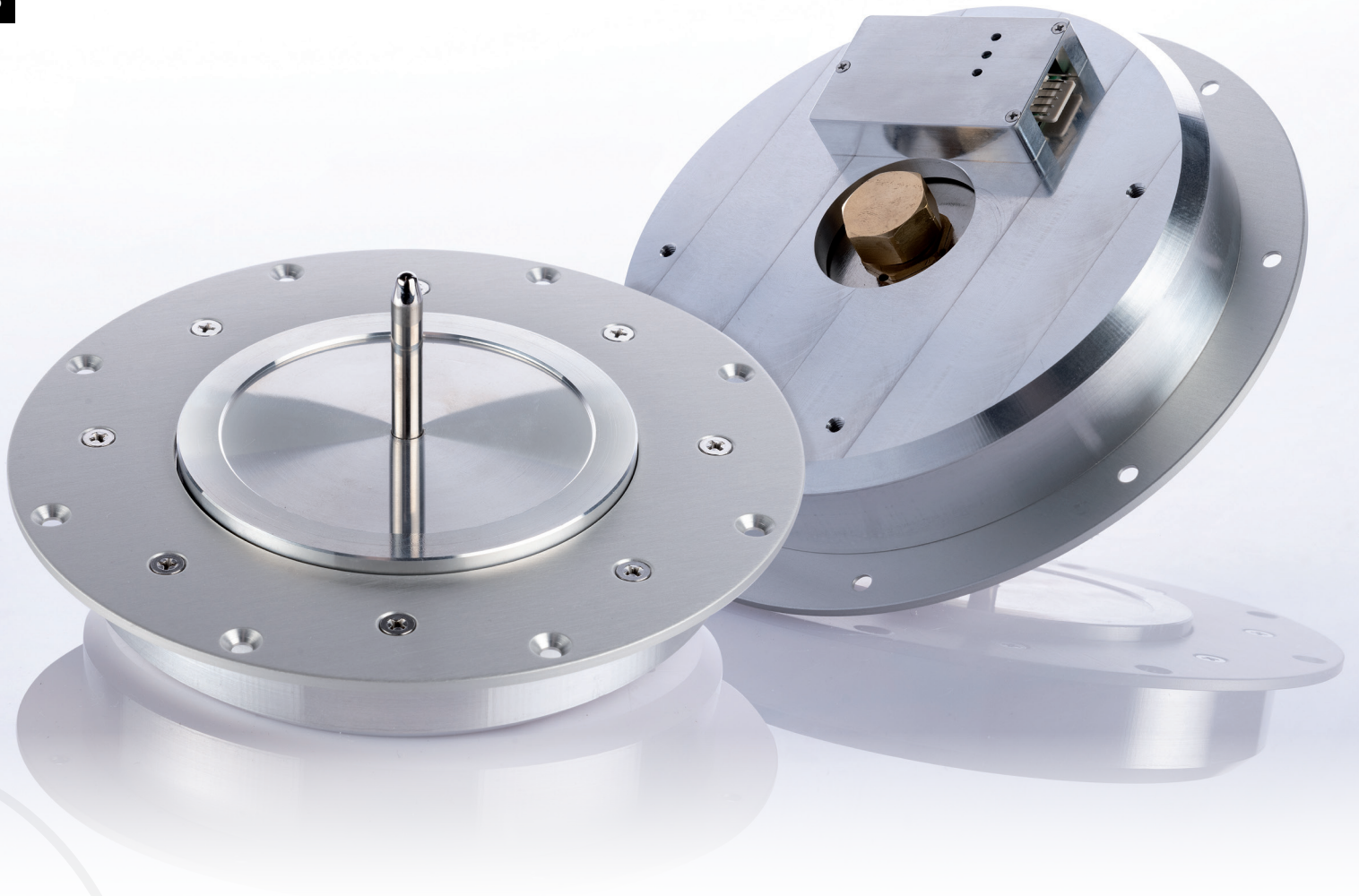
---

## TONARM

### TWIN GIMBAL DESIGN / SPRING LOADED TRACKING FORCE

The tonearm base and both gimbal elements are machined from solid aluminium. Precision pivot ball-bearings are used in conjunction with hardened steel spikes to ensure tightest tolerances within the tonearm assembly over a long lifetime. The tracking force is independent of gravity and adjusted with a torsion spring.





---

## MOTOR

### DIRECT-DRIVE

The drive unit is engineered and made in Germany. Its regulation is specifically designed for high-end audio application, placing emphasis on stability, with no quick start up times nor high torque. These features are only important for DJ applications and not appropriate in such a high quality system.

## TECHNICAL DATA

### DUAL PRIMUS MAXIMUS

#### DRIVE:

Drive:	Direct drive, Reference
Speed settings:	33/45/78
Wow & Flutter:	< ±0,04 % (DIN WTD)

#### TONEARM:

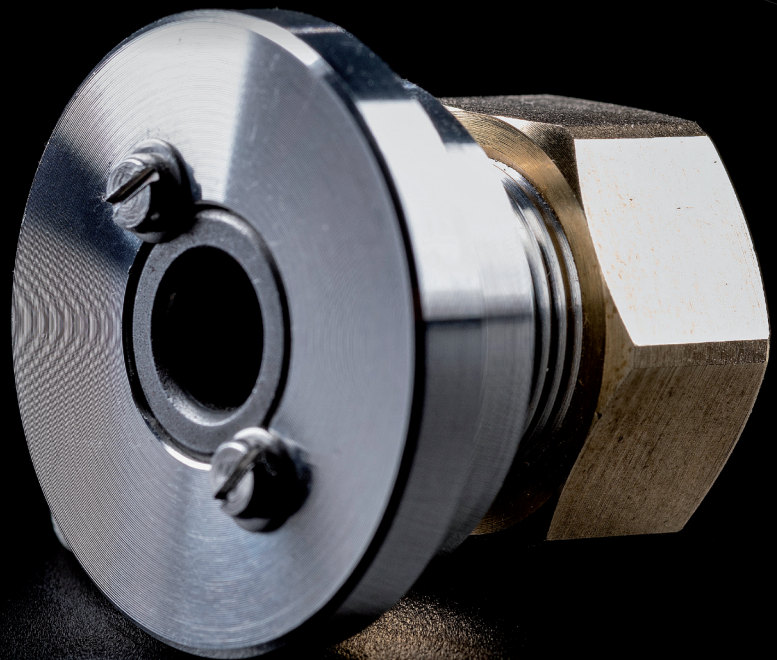
Auto-Start/-Stop-Function:	X
Bearing:	4 x Pivot ball-bearing, twin gimbal mounting
Effective length:	221 mm
Offset Angle:	24°
Overhang:	18,5 mm
Type:	dynamically balanced, with damping
Stylus Pressure Range:	0 g to 3 g
Cartridge Weight Range:	5 g to 12 g
Factory installed pick up:	Ortofon Quintet Bronze

#### PLATTER:

Material:	Solid Aluminum
Mat:	Rubber 4,5 mm
Bearing:	Hardened steel spindle, sintered metallhousing
Diameter:	304 mm
Weight (incl. Mat):	2800 g

#### PLINTH:

Material:	Solid MDF machined, solid Alu baseplate
Surface finish:	Individual wood veneers, personally selected
Feet:	Ø 60 mm / Elastomer, Height adjustable
Connection:	5 pin Tonearmconnector on RCA cable
Connection to Phono Input:	Yes
Connection to Line Input:	X
Digital Output:	X
Dimension, closed dustcover:	450 x 370 x 155 mm
Dimension, open dustcover:	T: 418 mm / H: 405 mm
Weight:	15 kg



HANDMADE IN GERMANY



[WWW.DUAL.DE](http://WWW.DUAL.DE)



**Dual**