



statement phono

Loving music

User manual



User manual

Dear **Clearaudio**-customer,

Thank you for choosing the *statement phono* preamplifier, a high quality product made in Germany by **Clearaudio**.

To avoid misuse and achieve the best possible results with your *statement phono* preamplifier, please read the instruction and user manual carefully.

The design of the **Clearaudio** *statement phono* preamplifier revolutionizes the reproduction of vinyl records to a standard barely imaginable.

The fully symmetrical circuit topology of the *statement phono* preamplifier together with the ability to use either RIAA, or almost any other phono equalization curve makes the *statement phono* preamplifier one of the most flexible and sophisticated phono preamplifiers in the entire audio world. Hand selected and matched electronic parts such as extremely low noise resistors and non-magnetic silver-glimmer capacitors contribute towards the phenomenal performance.

- Fully symmetrical analogue circuit
- Extremely low noise resistors and non-magnetic silver-glimmer capacitors
- Remote control input load adjustment
- RIAA and fully adjustable equalization curves
- 2 phono inputs
- 3 additional analogue inputs
- Fully symmetrical accu power supply in separate, massive housing.
- Double shielded case construction

We wish you a lot of pleasure with your new **Clearaudio** *statement phono* preamplifier!

Clearaudio electronic GmbH

This section must be read before any connection is made to the mains supply.

Warning

Do not expose the equipment to rain or moisture.

Do not handle the mains lead with wet hands.

No naked flame sources, such as lighted candles, should be placed on the equipment.

CE-MARKIERUNG



Copyright

Recording and playback of any material may require consent. For further information refer to the following:

- Copyright Act 1956
- Dramatic and Musical Performers Act 1958
- Performers Protection Acts 1963 and 1972
- Any subsequent statutory enactments and orders



Contents

1. Packing overview	4
2. Setup	4 - 5
3. Back view of the <i>statement phono</i>	6
4. General information of the display modes	7 - 10
5. Safety instructions	10
6. Service	10
7. Technical specifications	11 - 13
Warranty information	14

1. Packing overview

The **Clearaudio** *statement phono* is delivered in special packaging to ensure its safe transport. Retain this original packaging for any future transportation. Please check the contents immediately after unpacking:

- **Clearaudio** *statement phono* preamplifier
- External power supply
- 1 Power cord
- 2 Connection cords
- User manual
- Warranty card
- **Clearaudio** quality control card

To achieve the full performance of the *statement phono* preamplifier, please read the instruction and user manual carefully.

The following pages will ensure the best performance and will help to avoid any misuse.

2. Set up

2.1. Placement of the *statement phono*

The *statement phono* should be placed close to the turntable in order to use as short as possible phono cables between the tonearm and the *statement phono*. The best connection between the cartridge and the *statement phono* will be achieved with a direct-wired tonearm.

The *statement phono* should be placed as far away as possible from motors, transformers, power amplifiers or any other source of hum-inducing magnetic fields.

2.2 Applying Power

The external power supply contains two separated power supplies, which provide four individual supplies to each channel. Before applying power, check the voltage indication on the external power supply is correct for the local AC power in your country. Connect both 15-pin D-Sub-connectors to the *statement phono* and lock with the integrated screws, then connect the AC power cord and turn on the AC power-switches on the power-supplies.

After 3-5 seconds the "Mute LED" turns off and the signal outputs are working.

Note:

Never disconnect the D-Sub connector from the *statement phono* if the power supply is still on. Before you disconnect the D-Sub connector from the power supply or from the *statement phono*, make sure, that the AC Power switch is in the OFF position! Only then you can disconnect the D-Sub connectors.

For optimal audio performance we recommend that the *statement phono* is left continuously switched on stand by made to minimize thermal cycling of the components.



2.3 Input and Output Connections

The quality of the interconnect cables are extremely important in realizing the full sonic potential of the **Clearaudio** *statement phono*. Ideally the interconnect needs to be symmetrically designed, not coaxial.

Inputs and outputs for left and right channels are marked accordingly on the rear panel.

If you are using the unbalanced RCA-Inputs, the 'Input Select Switch' must be in the "Unbalanced" position, if using the XLR connector the switch must be set to "Balanced" it valids by balance+. By Statement are everything other.

To achieve the best high fidelity performance you also can connect the *statement phono* directly to your power amplifier. The automatic mute function will prevent any noise from reaching the loudspeakers if the statement phono is turned on or off while the power amplifiers are still turned on.

2.4. Minimizing Hum

Note: You should minimize hum before listening to an LP record!

Also we recommend the use of phono cables with symmetrical design such as **Clearaudio** "Quint" or "Sixstream".

To minimize hum and other undesirable noise, if possible you should use the balanced inputs and outputs.

Also always take care to ensure an effective 'Ground' connection to your turntable.

Please note:

Phonopreamplifier are devices with a high signal gain, because the voltage which is supplied by the cartridge of the turntable is very low (in the range of a few μV). For this reason high frequency interference signals are noticeable reinforced. A complete blocking of these interference signals in the device would degrade the audio performance.

A result could be that high frequency interference, for example from the 230 V net or 115 V AC will affect the sound quality.

The device should therefore not operate near to high frequency generating devices such as mobile phones or modems or electricity networks for data transport (PLC).

3. Rear view of statement phono



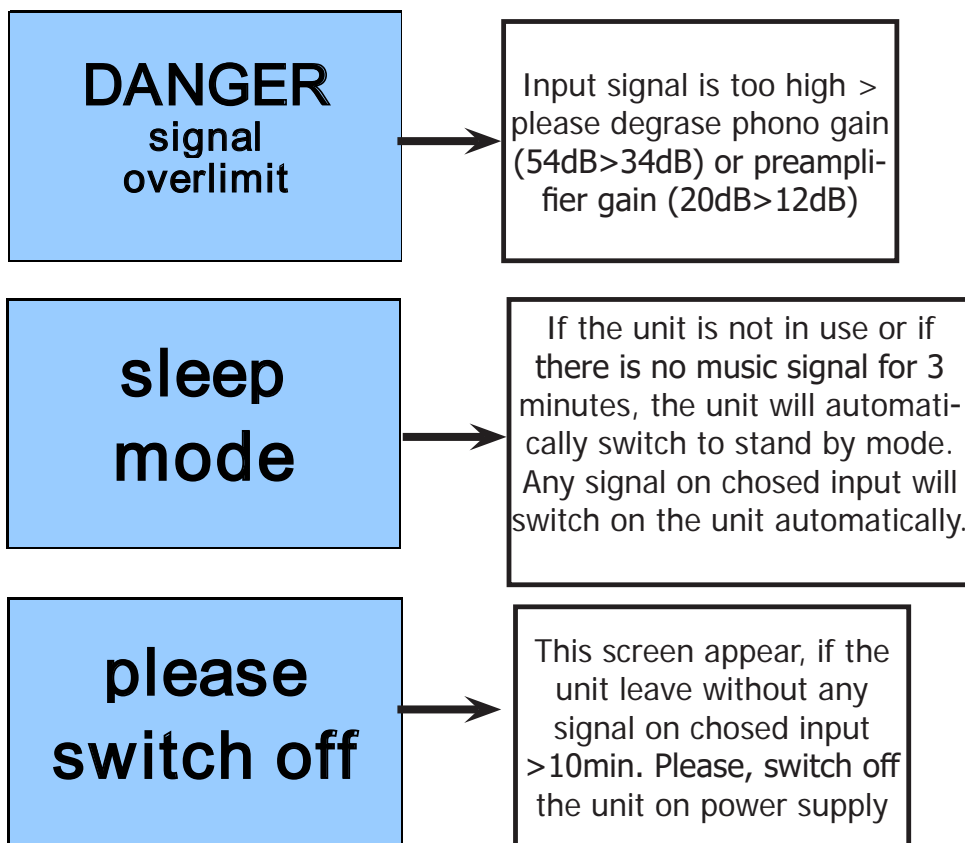
Pic. 1: Back view of the *statement phono*

<p>Pin connections: Inputs and Outputs XLR:</p>	<p>Pin 1 = GND (Shield) Pin 2 = Hot (+) Pin 3 = Cold (-)</p>
<p>Power Supply 15-pin. D-Sub Connector:</p>	<p>Pin 1, 9 = -18 V output class A buffer Pin 2 = GND remote control Pin 3, 5, 10, 13 = GND Pin 4, 11 = -18 V phono preamps Pin 6, 14 = +18 V phono preamps Pin 7 = +15V remote control Pin 8, 15 = +18 V output class A buffer Pin 12 = remote</p>

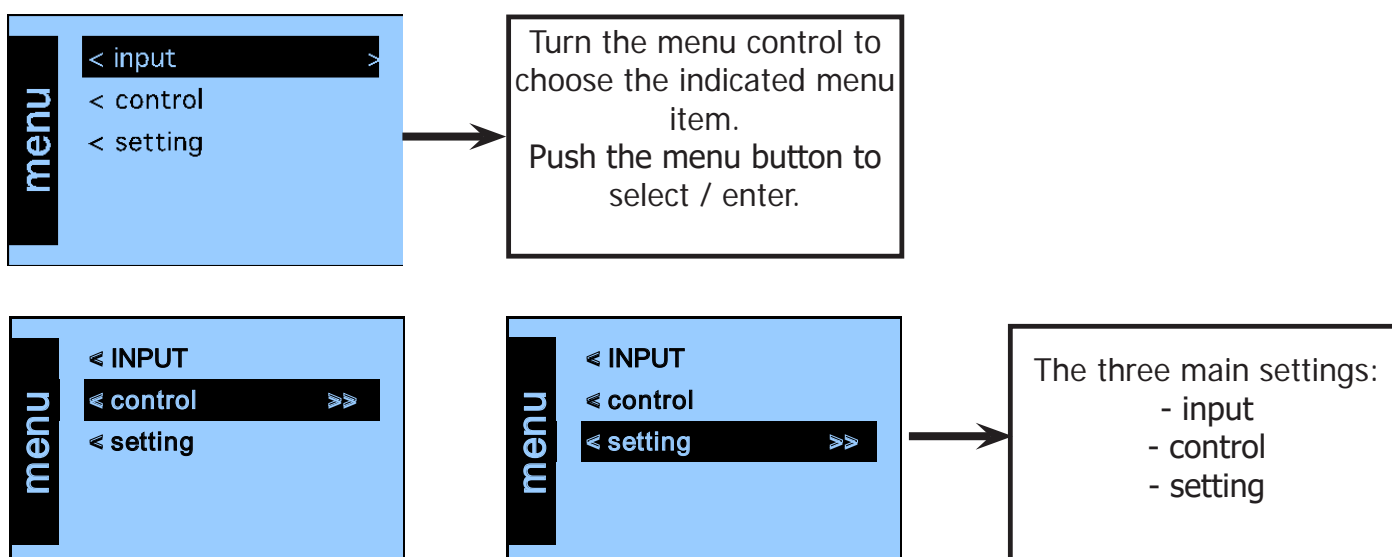
If you use a mobile phone near the *statement phono*, the audio performance can be influenced!

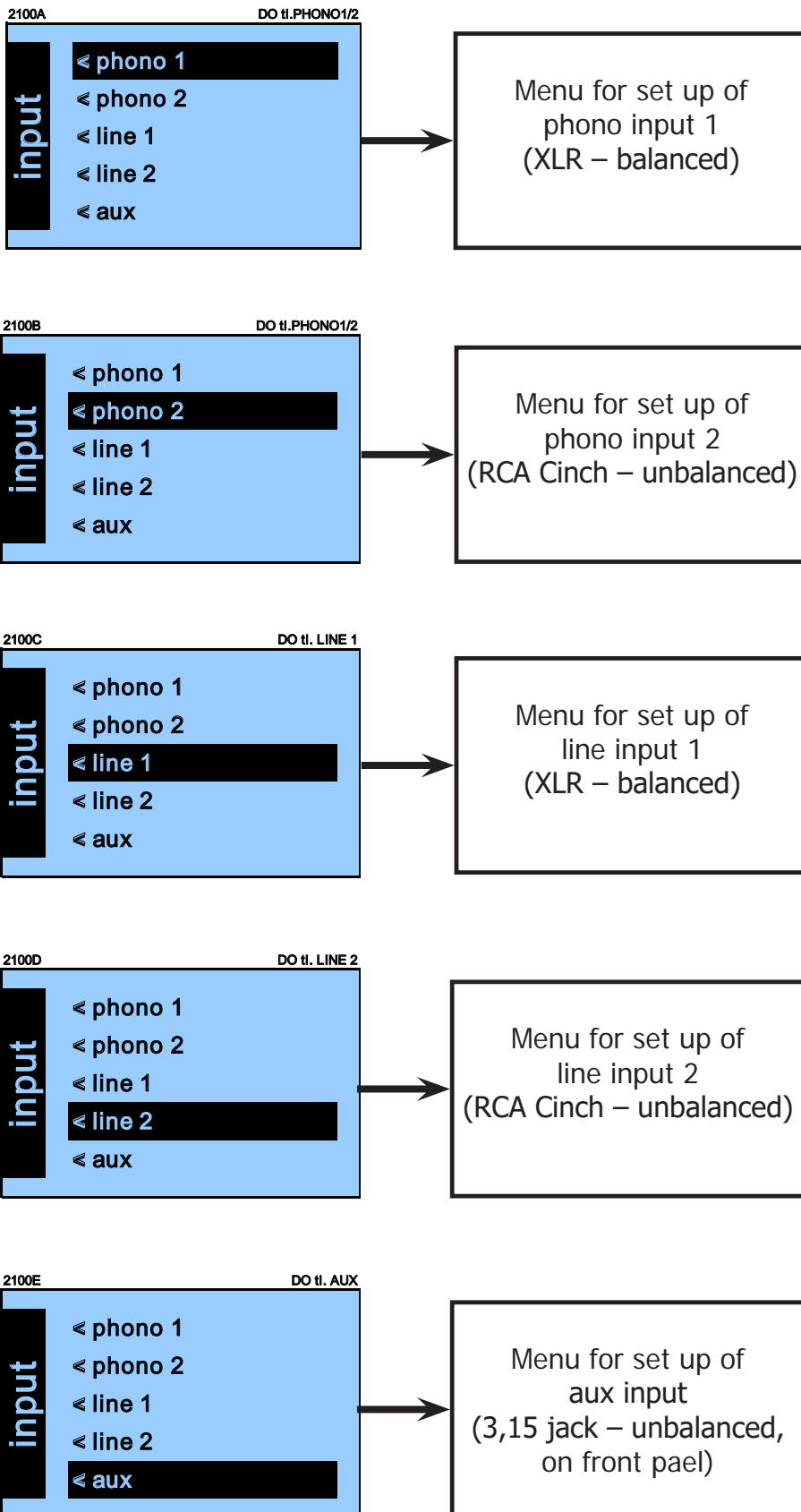
4. General information of display modes

The letters in the display will be highlighted in each menu step or in any location you are.

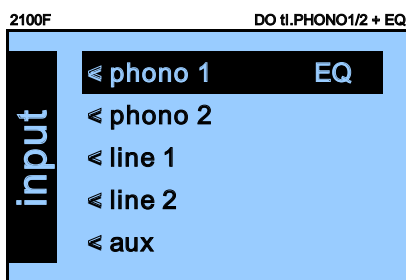


MENU:



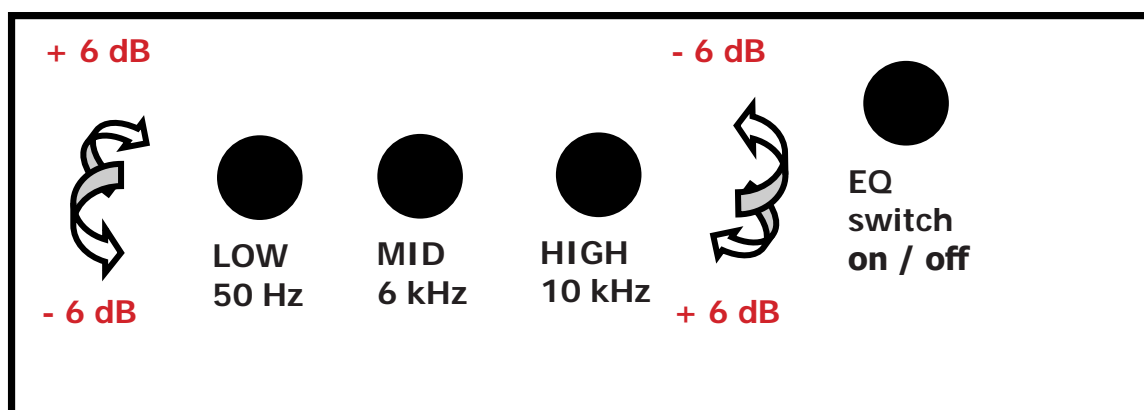


User manual

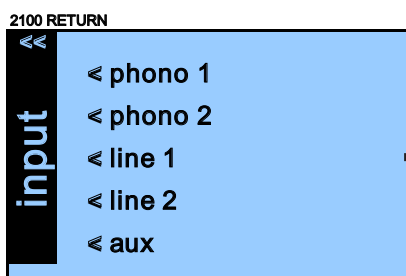


Display indicates that the "RIAA Equalization" is switched on. Only possible in phono 1/2 mode. For more information please see "RIAA Equalization".

RIAA Equalizer (EQ) on:

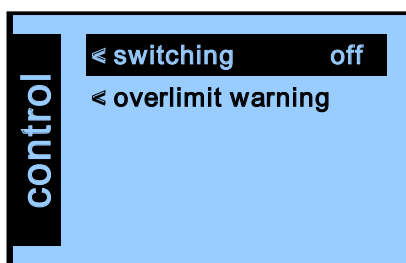


RIAA curve usage described in a follow up appendix!

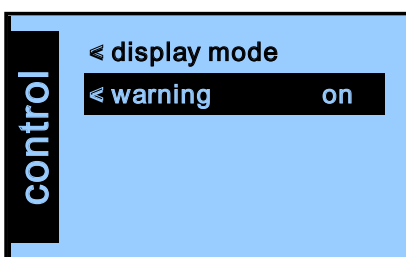


Return to "input main menu". Choose your input by turning the menu button and push to confirm

Control:



By pushing "switching on/off". - the background blue screen switched off in 3 sec after any change you make on menu per MENU knob or RC



By pushing "warning on/off" you can choose whether the overlimit warning will be indicated in the display or not. We recommend that this is left "on".

5. Safety instructions

Important!

- Do not use the *statement phono* preamplifier if you see any damage whatever!
- Do not recycle the equipment as domestic refuse!

Please note:

If the device is not used for a longer time, you should switch it off with the switch on the rear panel to avoid unnecessary Standby-consumption.



6. Service

Should service be necessary: service for all **Clearaudio** products should only be carried out by **Clearaudio** authorized service personnel.

In case of any repair, the **Clearaudio** equipment needs to be send to your nearest authorized dealer or distributor. Only if your dealer or distributor cannot support you please contact **Clearaudio** direct:

Clearaudio electronic GmbH
Spardorfer Str. 150
91054 Erlangen
Germany

Tel/Phone: +49 9131 40300100
www.clearaudio.de
www.analogshop.de
info@clearaudio.de

To ensure secure transport, only ever ship the *statement phono* in the original packing!
Clearaudio can only provide the warranty if the *statement phono* is properly re-packed and shipped in the original packing.



7. Technical specifications

STATEMENT High End Phono Preamplifier

Preamplifier PURE CLASS A:

Inputs: - Phono 1 - Phono 2 - Line 1 - Line 2 - Aux	5 (4 x rear, 1 x front) balanced XLR rear unbalanced RCA Cinch rear balanced XLR rear unbalanced RCA Cinch rear unbalanced 3,15 Jack front
Outputs: - Switchable - Phone	2 back balanced XLR and unbalanced RCA 1 front
Dimensions (W/D/H in mm):	435 x 350 x 100mm
Dimensions (W/D/H in inches):	17.13 x 13.78 x 3.94 inches
Weight:	12kg

Power supply:

Fully symmetrical line accu - power supply

Main power / channel:	2 x 3 x 18V / 1A
Battery power / channel:	2 x 18 V/3.2 Ah
Power consumption:	Max. consumption: 200 watts Consumption in operation: 50 - 100 watts Standby mode: 0.5 watts Off mode: 0.0 watts
Dimensions (W/D/H in mm):	435 x 350 x 100mm
Dimensions (W/D/H in inches):	17.13 x 13.78 x 3.94 inches
Weight:	22kg

Technical specifications

statement phono preamplifier:

Nominal input voltage:	0.5 mV/MC mode (+54 dB) 5 mV/MM mode (+34 dB)
Headroom:	+12dB
Input load:	8 values, switchable RC (Remote control device) - 5R, 25R, 50R, 100R, 250R, 500R, 1k, 47k
Main gain / 1 kHz:	+54 dB MC mode mode MPS (Menu Pre Setting) +34 dB MM switchable
Subsonic filter:	-24 dB/octave @ 20 Hz, switchable RC (Remote control device)
RIAA accuracy:	+ 0.05 dB/20-100 kHz
Phono equalizer:	3 bands, +/- 6 dB, switchable RC (Remote control device) 50 Hz, 6 kHz, 10 kHz
S/N*: - 5 mV/1 kHz/+50 dB:	-82 dB -90 dB ("A" weighted)
- 0.5 mV/1 kHz/+70 dB	-72 dB -80 dB ("A" weighted)
THD +N*: - 5 mV/1 kHz/+50 dB:	< 0.008% < 0.0035% ("A" weighted)
- 0.5 mV/1 kHz/+70 dB:	< 0.03% < 0.015% ("A" weighted)
- total gain +50 dB:	<0.004% /1 kHz/Vout=10 V <0.0003% ("A" weighted) / 1 kHz/Vout=10 V
IMD*: - 5 mV/1 kHz/+50 dB:	< 0.01% <0.0035% ("A" weighted)

Technical specifications

statement line preamplifier:

Nominal input voltage:	4 V/1 kHz @ +12 dB 2 V/1 kHz @ +20 dB
Nominal input impedance:	10 k Ω
Gain:	2 values, switchable MPS (Menu Pre Setting) +12 dB +20 dB
Nominal output impedance:	10 Ω
Nominal output voltage:	> 12 V
Minimal load:	10 Ω
Nominal output power:	2 x 10 W/10 Ω , pure class A
S/N:	
- 4 V/1 kHz/+12 dB:	>98 dB >104 dB ("A" weighted)
- 2 V/1 kHz/+20 dB:	>92 dB >98 dB ("A" weighted)
THD +N:	
- 4 V/1 kHz/+12 dB:	< 0.004% < 0.003% ("A" weighted)
- 2 V/1 kHz/+20 dB:	< 0.006% < 0.003% ("A" weighted)
- total gain +12 dB	<0.0008% /1kHz/Vout=10V
IMD:	
- 4 V/1 kHz/+12 dB:	< 0.006% < 0.0035% ("A" weighted)
Warranty:	5 years*

* Provided that the warranty card is correctly completed and returned to **Clearaudio** within 14 days of purchase.

Clearaudio electronic is not responsible for typographical errors in descriptions.

Technical specifications subject to change or improvement without prior notice.

Product availability is as long as stock lasts.

Copies and reprints of this documents, including extracts, require written consent from **Clearaudio electronic GmbH; Germany**

To achieve the full **Clearaudio** warranty (*statement phono* 5 years), it is necessary that you fill out and send the corresponding part of the warranty registration certificate /card back to **Clearaudio**, within two weeks after purchase.

Only if the product is returned in its original packing **Clearaudio** can provide the warranty of 5 years. Otherwise **Clearaudio** provides the legal warranty of 2 years.



ENGLISH

WARRANTY

For warranty information, contact your local **Clearaudio** distributor.

RETAIN YOUR PURCHASE RECEIPT

Your purchase receipt is your permanent record of a valuable purchase. It should be kept in a safe place to be referred to as necessary for insurance purposes or when corresponding with **Clearaudio**.

IMPORTANT

When seeking warranty service, it is the responsibility of the consumer to establish proof and date of purchase. Your purchase receipt or invoice is adequate for such proof.

FOR U.K. ONLY

This undertaking is in addition to a consumer's statutory rights and does not affect those rights in any way.



FRANÇAIS

GARANTIE

Pour des informations sur la garantie, contacter le distributeur local **Clearaudio**.

CONSERVER L'ATTESTATION D'ACHAT

L'attestation d'achat est la preuve permanente d'un achat de valeur. La conserver en lieu sûr pour s'y reporter aux fins d'obtention d'une couverture d'assurance ou dans le cadre de correspondances avec **Clearaudio**.

IMPORTANT

Pour l'obtention d'un service couvert par la garantie, il incombe au client d'établir la preuve de l'achat et d'en corroborer la date. Le reçu ou la facture constituent des preuves suffisantes.



DEUTSCH

GARANTIE

Bei Garantiefragen wenden Sie sich bitte zunächst an Ihren **Clearaudio** Händler. Heben Sie Ihren Kaufbeleg gut auf.

WICHTIG!

Die Angaben auf Ihrer Quittung erlauben uns die Identifizierung Ihres Gerätes und belegen mit dem Kaufdatum die Dauer Ihrer Garantie-Ansprüche. Für Serviceleistungen benötigen wir stets die Gerätenummer. Diese finden Sie auf dem Typenschild auf der Rückseite des Gerätes oder auch in der beige-fügte Garantie-Registriertkarte.



NEDERLANDS

GARANTIE

Voor inlichtingen omtrent garantie dient u zich tot uw plaatselijke **Clearaudio**.

UW KWITANTIE, KASSABON E.D. BEWAREN

Uw kwitantie, kassabon e.d. vormen uw bewijs van aankoop van een waardevol artikel en dienen op een veilige plaats bewaard te worden voor evt, verwijzing bijv, in verbend met verzekering of bij correspondentie met **Clearaudio**.

BELANGRIJK

Bij een evt, beroep op de garantie is het de verantwoordelijkheid van de consument een gedateerd bewijs van aankoop te tonen. Uw kassabon of factuur zijn voldoende bewijs.

 **ITALIANO****GARANZIA**

L'apparecchio è coperto da una garanzia di buon funzionamento della durata di un anno, o del periodo previsto dalla legge, a partire dalla data di acquisto comprovata da un documento attestante il nominativo del Rivenditore e la data di vendita. La garanzia sarà prestata con la sostituzione o la riparazione gratuita delle parti difettose. Non sono coperti da garanzia difetti derivanti da uso improprio, errata installazione, manutenzione effettuata da personale non autorizzato o, comunque, da circostanze che non possano riferirsi a difetti di funzionamento dell'apparecchio. Sono inoltre esclusi dalla garanzia gli interventi inerenti l'installazione e l'allacciamento agli impianti di alimentazione.

Gli apparecchi verranno riparati presso i nostri Centri di Assistenza Autorizzati. Le spese ed i rischi di trasporto sono a carico del cliente. La casa costruttrice declina ogni responsabilità per danni diretti o indiretti provocati dalla inosservanza delle prescrizioni di installazione, uso e manutenzione dettagliate nel presente manuale o per guasti dovuti ad uso continuato a fini professionali.

 **ESPAÑOL****GARANTIA**

Para obtener información acerca de la garantía póngase en contacto con su distribuidor **Clearaudio**.

GUARDE SU RECIBO DE COMPRA

Su recibo de compra es su prueba permanente de haber adquirido un aparato de valor, Este recibo deberá guardarlo en un lugar seguro y utilizarlo como referencia cuando tenga que hacer uso del seguro o se ponga en contacto con **Clearaudio**.

IMPORTANTE

Cuando solicite el servicio otorgado por la garantía el usuario tiene la responsabilidad de demostrar cuándo efectuó la compra. En este caso, su recibo de compra será la prueba apropiada.



Loving music

clearaudio electronic GmbH

Spardorfer Straße 150
91054 Erlangen
Germany

Phone/Tel.: +49 9131 40300 100
Fax: +49 9131 40300 119
www.clearaudio.de
www.analogshop.de
info@clearaudio.de

Handmade in Germany

(Änderungen und Irrtümer vorbehalten. Für Druckfehler keine Haftung.
Lieferbar solange Vorrat reicht. -

Technical specifications are subject to change or improvement without prior notice.
Clearaudio accepts no liability for any misprints.
Product availability as long as stock lasts.)
2018