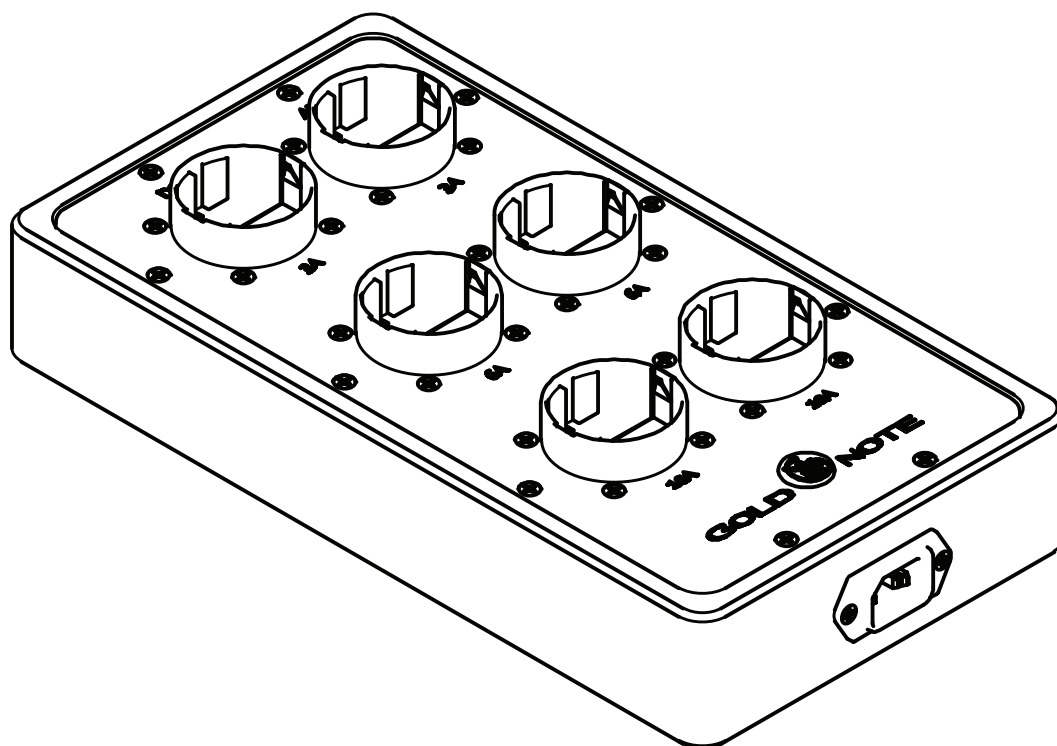


# GOLD NOTE

il suono italiano



## ARNO

POWER DISTRIBUTOR

USER MANUAL



# INDEX

DESCRIPTION AND SPECIFICATIONS..... P. 3

FRONT PANEL..... P. 5

OPTIONAL WALL - MOUNT ALUMINIUM BOARD..... P. 6

WARRANTY AND SERVICE..... P. 7

TROUBLESHOOTING..... P. 8

IMPORTANT SAFETY INFORMATION..... P. 9



# DESCRIPTION AND SPECIFICATIONS

## ARNO EXTRA

The Arno Extra is one of the best AC power distributors on the market: it features six AC plugs Rhodium plated in Italy, premium grade Quantum filters and special digital filters to stop any interference coming from any audio equipment.

The Quantum filters installed in pairs on any single plug are built to reduce electromagnetic and radio interferences at the best.

The Arno Extra features solid core hybrid multi conductors in silver and copper that are cryogenically treated to achieve top results.

Its leather covered wooden structure and 5mm thick aluminium top and bottom plates are able to keep magnetic fields at the minimum to enhance best audio performance.

Every single Arno Extra Power Distributor comes with a serial number indelibly printed on the bottom side of the aluminium panel guarantees Gold Note original product.

## SPECIFICATIONS

Construction: Proprietary Gold Note geometry  
AC Plugs: 3 for digital equipment, 3 for analogue equipment, 10/6/3Ah specific filters  
Input Plug: One or (on demand) Two separated 15Ah IEC male plug for Digital and Analogue rails  
Conductors: hybrid pure silver and copper conductors 18AWG  
Insulation: Elastollan oiled insulated tube & air  
Capacitance: 18pF/m  
Inductance: 0.6µH  
Resistance: 0.0001ohm  
Filtering: Premium grade Gold Note Quantum Filter, RFI/EMI and Digital filters

## ARNO PLUS

The Arno Plus is a six AC plugs Rhodium plated in Italy power distributor built with high quality solid core copper oxygen-free conductors and features. Quantum and digital filters to efficiently power any audio system.

The Quantum filters enable the Arno Plus to reduce electromagnetic and RFI/EMI interferences also.

Its leather covered wooden structure and 5mm thick aluminium top and bottom plates are able to keep magnetic fields at the minimum to enhance best audio performance.

Every single Arno Plus Power Distributor comes with a serial number indelibly printed on the bottom side of the aluminium panel guarantees Gold Note original product.

## SPECIFICATIONS

Construction: Proprietary Gold Note geometry  
AC Plugs: 3 for digital equipment, 3 for analogue equipment, 10/6/3Ah specific filters  
Input Plug: One 15Ah IEC male plug  
Conductors: pure copper conductors 18AWG each  
Insulation: Elastollan oiled insulated tube & air  
Capacitance: 50pF/m  
Inductance: 0.8µH  
Resistance: 0.0001ohm  
Filtering: Special Gold Note Quantum Filter, RFI/EMI and Digital filters

# DESCRIPTION AND SPECIFICATIONS

## ARNO

The Arno is a six AC plugs power distributor built with high quality solid core copper conductors proven to be oxygen free extruded.

It also features Quantum and digital filters derived from the top models to properly drive any audio system the best.

Its wooden structure and aluminium top and bottom covers keep magnetic fields at the minimum to enhance best audio performance.

Every Arno Power Distributor comes with a serial number indelibly printed on the bottom side of the aluminium panel guarantees Gold Note original product.

## SPECIFICATIONS

Construction: Proprietary Gold Note geometry

AC Plugs: 3 for digital equipment, 3 for analogue equipment,

10/6/3Ah specific filters

Input Plug: One 15Ah IEC male plug

Conductors: solid Core pure copper conductors 18AWG

Insulation: Elastollan insulated tube

Capacitance: 50pF/m

Inductance: 0.8μH

Resistance: 0.0001ohm

Filtering: Gold Note Quantum Filter, RFI/EMI and Digital filters

## CONNECTORS:

### - EUROPEAN STANDARD

#### OUTPUT:

Six SHUCO AC 15Ah power plug featuring top quality single extruded conductor (Rhodium plated for the EXTRA and PLUS models)

#### INPUT:

15Ah IEC male plug single or double on demand AC POWER CORD is NOT SUPPLIED

### - US STANDARD

#### OUTPUT:

Six US AC 15Ah power plug featuring top quality single conductor (Ceramic body for the EXTRA and PLUS models)

#### INPUT:

15Ah IEC male plug single or double on demand AC POWER CORD is NOT SUPPLIED.

#### WARNING:

DO NOT EVER EXCEED THE MAX POWER ABSORPTION ACCEPTED by THE ARNO POWER DISTRIBUTOR OF THE INDICATED 10Ah PER ANY SINGLE EQUIPMENT USED

# FRONT PANEL

## DIGITAL

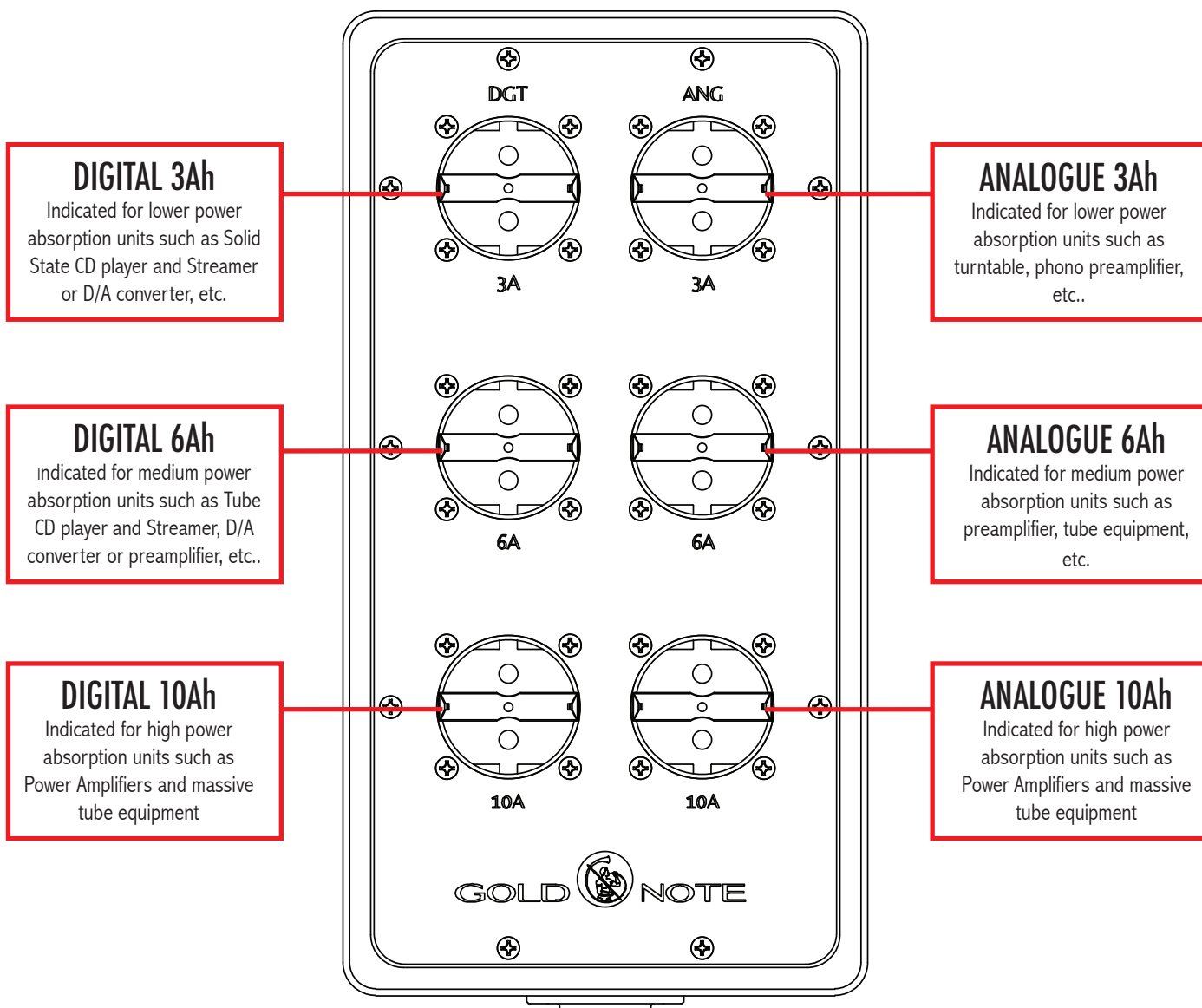
AC plug inputs dedicated for Digital units because specific filters, they can work even with analogue apparatus to which the digital filters do interfere.

The absorption indicated for each plug only refers to the kind of Quantum, RFI/EMI and digital filters installed while all plugs can work with max 10Ah power working in perfect safety.

## ANALOGUE

AC plug inputs dedicated for Analogue units because specific filters, they can work even with Digital apparatus.

The absorption indicated for each plug only refers to the kind of Quantum and RFI/EMI installed while all plugs can work with max 10Ah power working in perfect safety.



# OPTIONAL WALL - MOUNT ALUMINIUM BOARD

## STEP 1

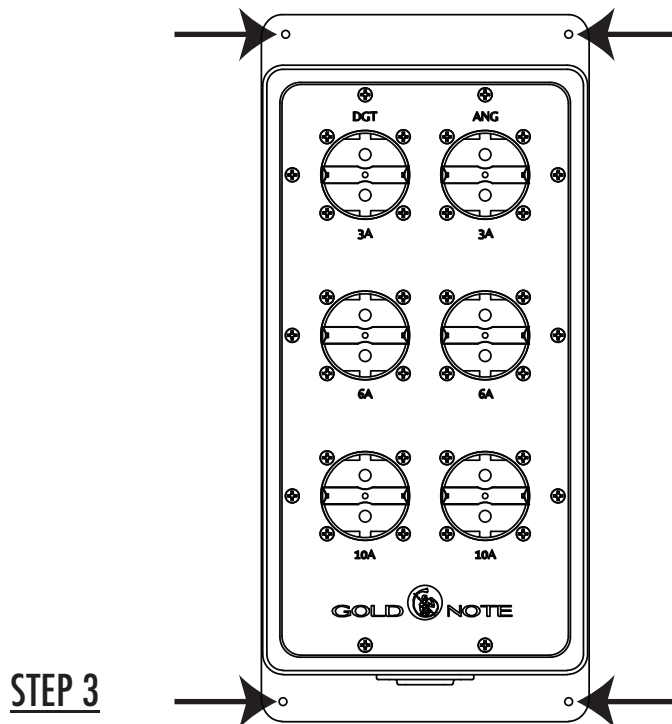
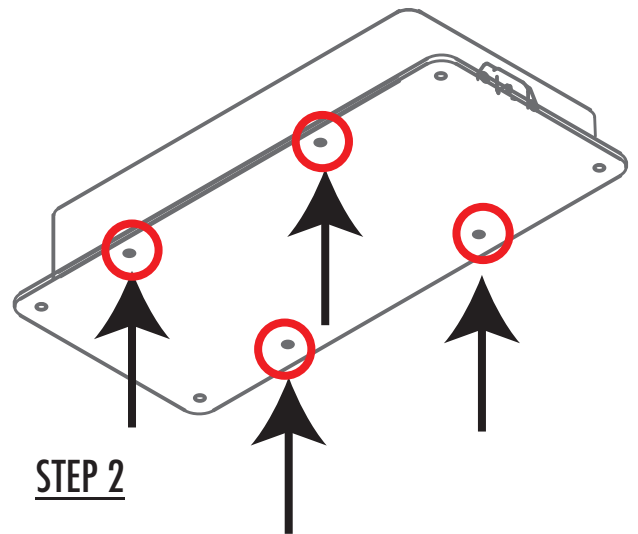
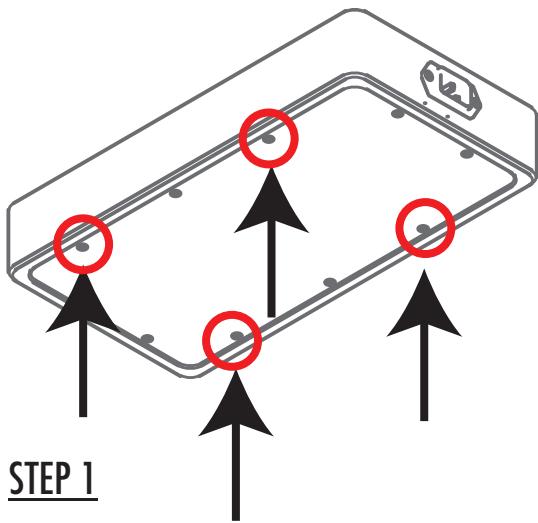
remove the indicated Philips shape indicated bolts as indicated in the picture aside.

## STEP 2

Install the optional wall-mount aluminium board replacing the previously removed four bolts in place as indicated in the picture aside.

## STEP 3

Fixing the power distributor to the wall using the supplied wall plugs and bolts supplied



# WARRANTY AND SERVICE

## **WARRANTY**

To validate the warranty is necessary to register the unit on the Gold Note internet web site within 15 days from the purchase on the appropriate area of the web site: [www.goldnote.it/warranty](http://www.goldnote.it/warranty)

If the unit is not registered correctly or has been purchased from a different country of the purchaser home address the unit will not be covered by any warranty and the registration will be refused.

The warranty does not cover in any case: Tubes, Phono Cartridge Stylus and Batteries.

## **SERVICE**

Every GOLD NOTE® product is the result of meticulous technological research, and consequently their correct functioning is guaranteed. In spite of this it is possible that problems may emerge which non-specialist users cannot resolve.

In this case, contact your dealer to be advised on how the fault can be solved.

Do not return any object directly to the factory or to the distributor without being authorised to do so.

In such cases both GOLD NOTE® and the distribution agents decline responsibility of any kind.

For more information please visit [www.goldnote.it/service](http://www.goldnote.it/service)

## **PLEASE NOTE**

Descriptions and technical characteristics may vary at any time and without notice.



# FAQ AND TROUBLESHOOTING

## FAQ

ACTION	DESCRIPTION	HOW TO DO IT
CLEANING THE UNIT	<ul style="list-style-type: none"><li>•The Unit is dirty and needs to be cleaned</li></ul>	<ul style="list-style-type: none"><li>•With EXTREME care use ONLY diluted alcohol and a very soft 100% cotton cloth to sweep dust and stains out.</li><li>•Any acid or not extremely soft cloth will irreversibly damage the amplifier fine aesthetic.</li><li>•Do not use any alcohol to clean the unit anodised label, or printed parts. Only dry cloth is allowed.</li></ul>

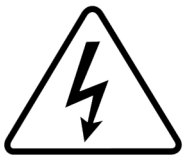
## TROUBLESHOOTING

SYMPTOM	DESCRIPTION	CAUSE	REMEDY
PLUGS DO NOT WORK	The equipment connected does not work	<ul style="list-style-type: none"><li>•The unit is plugged to a rail not powered</li></ul>	<ul style="list-style-type: none"><li>•Be sure your ARNO POWER DISTRIBUTOR is well plugged in all rails with a correct external power not supplied.</li></ul>
OVERHEATING	The ARNO is overheated on plugs or aluminium covers	<ul style="list-style-type: none"><li>•The ARNO is been over powered</li></ul>	<ul style="list-style-type: none"><li>•Remove the main power cord and disconnect all units then verify the units are 10Ah each maximum absorption</li><li>•Remove the main power cord and disconnect all units then verify if one or</li></ul>

For spare parts visit the official Gold Note store at:

[www.akamaiaudio.it](http://www.akamaiaudio.it)

# IMPORTANT SAFETY INFORMATION

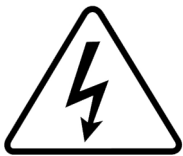


**CAUTION**  
RISK OF ELECTRIC SHOCK  
DO NOT OPEN



## **CAUTION!**

TO REDUCE THE RISK OF ELECTRIC SHOCK, DO NOT REMOVE COVER (OR BACK). NO USER-SERVICEABLE PARTS INSIDE. REFER ONLY TO QUALIFIED GOLD NOTE SERVICE PERSONNEL FOR SERVICE



**WARNING**  
FIRE OR SHOCK HAZARD



## **WARNING!**

TO PREVENT FIRE OR SHOCK HAZARD, DO NOT EXPOSE THIS APPLIANCE TO RAIN OR MOISTURE

Do not disassemble any part of the product.

Do not use any part of the product for other purposes.

For service and problems of any kind, contact qualified Gold Note personnel.

Protect the product from rain, humidity and keep away from heat sources, electric and electronic motors etc.

The power Chord supplied must be used only on this unit.

Gold Note does not have responsibility for any improper use of this unit.

This appliance has a serial number located on the rear panel.

Please record the model and serial number and retain them for your records.

Serial Number: \_\_\_\_\_

Model: \_\_\_\_\_

# IMPORTANT SAFETY INFORMATION

- 1.** Read these instructions and store them.
- 2.** Heed all warnings.
- 3.** Follow the instructions.
- 4.** Do not use this apparatus near water.
- 5.** Clean only with a dry cloth.
- 6.** Do not block the ventilation openings and install in accordance with the manufacturer's instructions.
- 7.** Do not install near heat sources such as radiators, heat registers, stoves or other apparatus (including amplifiers) that produce heat.
- 8.** Do not defeat the safety purpose of the polarised or grounding-type plug: a polarised plug has two blades with one wider than the other.

A grounding type plug has two blades and a third grounding prong. The wide blade or the third prong are provided for your safety.

If the provided plug does not fit into your outlet, consult an electrician for replacement of the obsolete outlet.

- 9.** Protect the power cord from being walked on or pinched particularly at plugs, convenience receptacles, and the point where they exit from the apparatus.
- 10.** Only use attachments/accessories specified by the manufacturer.

- 11.** Use only with the cart, stand, tripod, bracket, or table specified by the manufacturer, or sold with the apparatus.

When a cart is used, use caution when moving the cart/apparatus combination to avoid injury from tip-over.

- 12.** Unplug this apparatus during lightning storms or when unused for long periods of time.
- 13.** Refer all servicing to qualified service personnel only. Servicing is required when the apparatus has been damaged in any way (such as when the power cord or plug is damaged, liquid has been spilled or objects have fallen into the apparatus, the apparatus has been exposed to rain or moisture) and in any case when the apparatus does not operate normally or has been dropped.











 [goldnote\\_italy](https://www.instagram.com/goldnote_italy)

 [Gold Note Audio](https://www.facebook.com/GoldNoteAudio)

 [Gold Note](https://www.youtube.com/GoldNote)

Akamai S.r.l.  
[service@goldnote.it](mailto:service@goldnote.it)  
[www.goldnote.it](http://www.goldnote.it)