

DUAL CS 529

FULLY AUTOMATIC HI-FI TURNTABLE



THE NEW DUAL CS-SERIES

DEVELOPED IN OUR OWN
DESIGN CENTRE IN GERMANY

PRECISION

From clockwork to turntable

QUALITY

5 year warranty

TRADITION

Building turntables for generations

Dual

**5 YEAR
WARRANTY**

REMOVABLE HEADSHELL

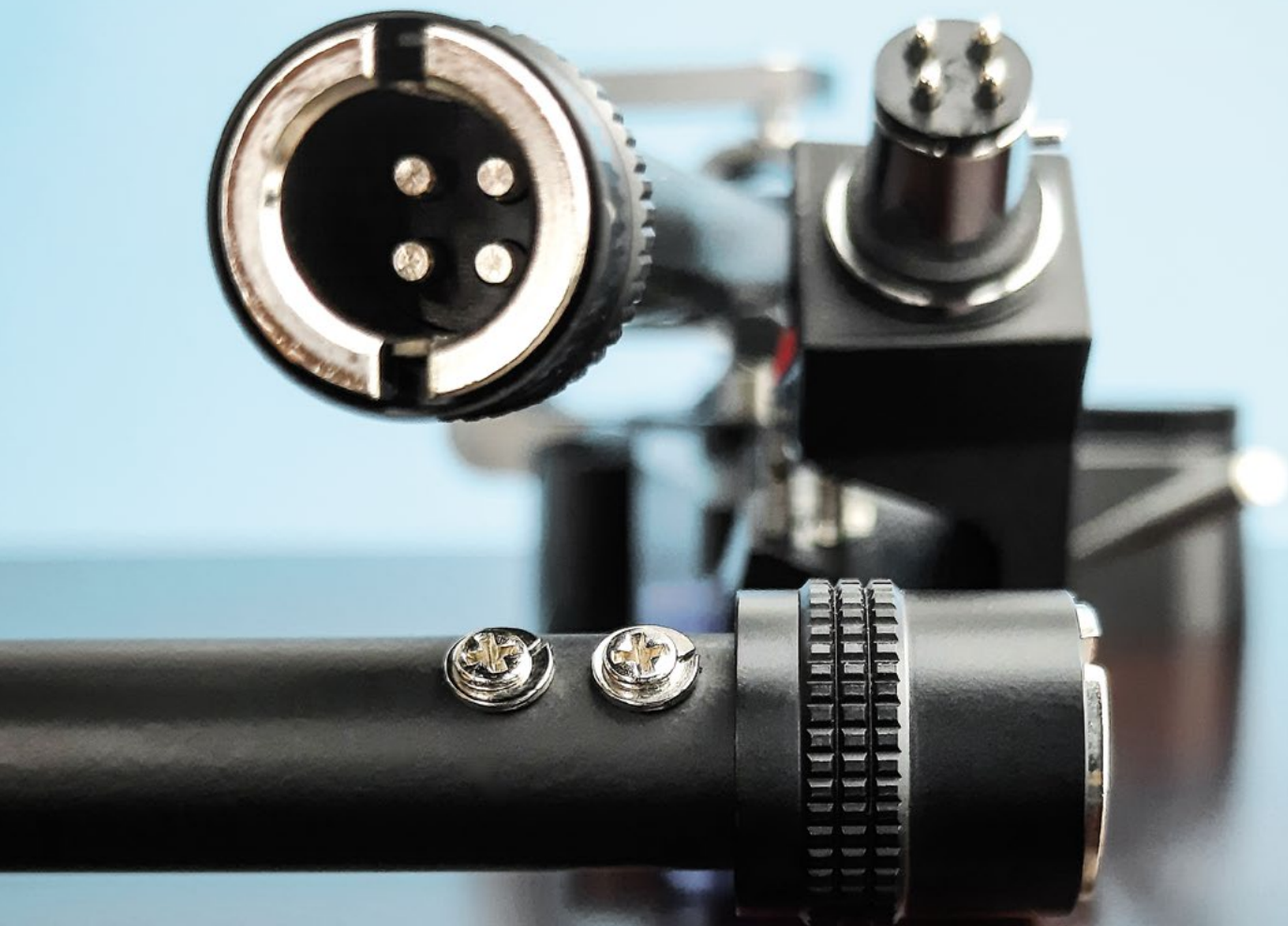
DUAL TECHNOLOGY

Quick & easy changes

Changes are done in less than a minute due to a screw mechanism for the headshell together with easy adjustments for tracking force and antiskating.

Always correctly adjusted

The pick up is correctly mounted and adjusted only once on the headshell. Subsequent changes do not require any new adjustments.



SPRING LOADED ANTISKATING

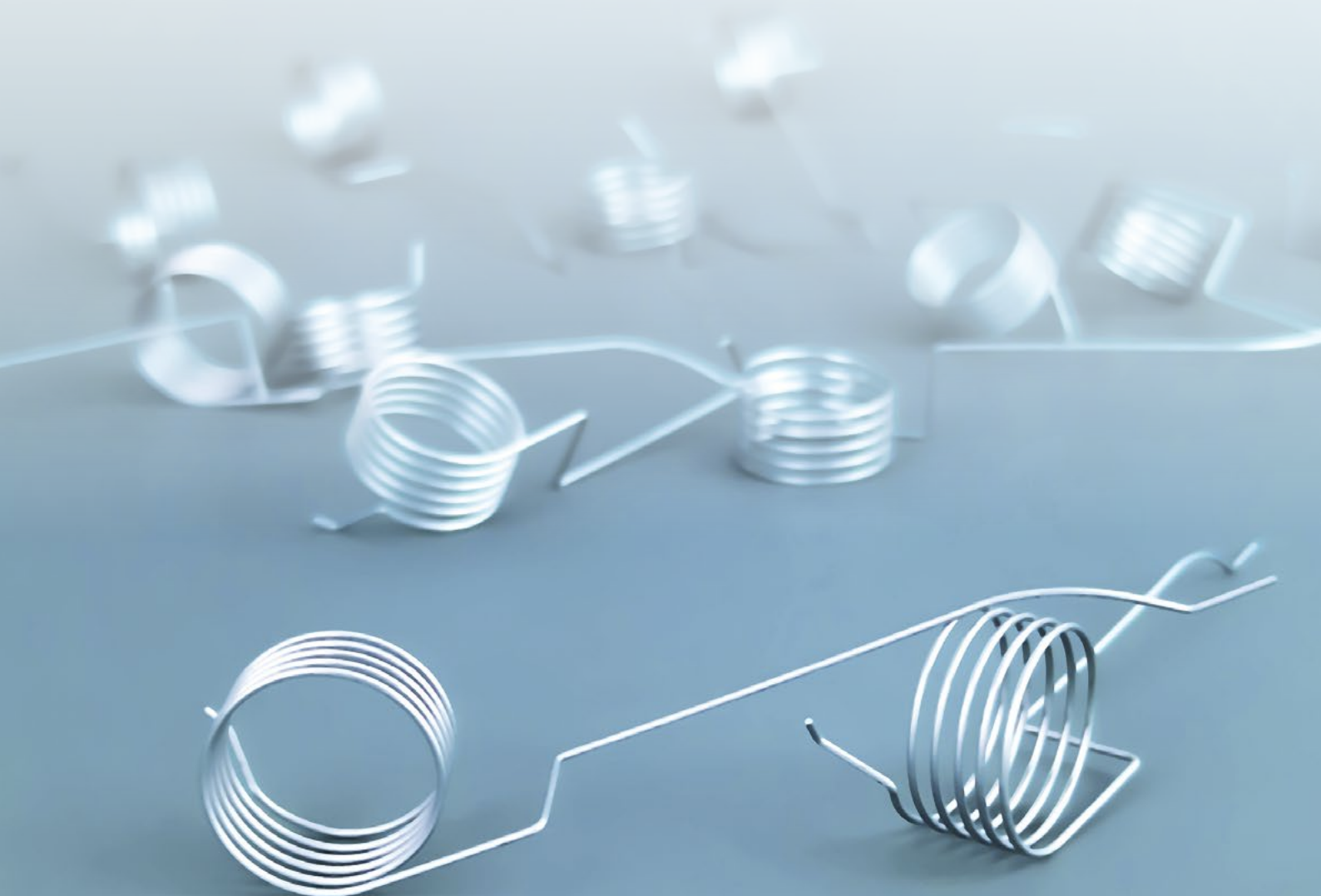
DUAL TECHNOLOGY

Fine adjustment

The antiskating can be adjusted quickly and easily. The dial has a printed scale for guidance and no predefined settings.

Precise skating compensation

An ingenious mechanism with a specially shaped spring which guarantees optimal skating compensation over the entire playback range.



THE CLASSIC DUAL TONEARM

DUAL TECHNOLOGY

Twin gimbal design

Due to the pivot points being arranged around the tonearm tube, on both sides in the vertical and the horizontal plane, the tilting momentum is reduced to an absolute minimum.

Precision pivot ball-bearing

The bearing design is almost free of play and guarantees the lowest friction. It consists of a small ball-bearing cup and a precise machined tip in the rotating shaft.



AUTOMATIC

DUAL TECHNOLOGY

Maximum ease of use

Playback can be started and stopped easily and conveniently at the touch of a button.

Without compromise

During playback, the mechanics of the automatic system are decoupled from the tonearm and the platter.



PLINTH: SOLID MDF

- Chassis construction with rubber dampers
- Bluetooth for audio and remote-control functions
- Surface option: Walnut wood veneer



PLATTER: ALUMINIUM

- Aluminium die-cast, long term precision
- Heavy rubber mat for resonance damping
- Hardened steel spindle in a brass bushing



TONEARM: TWIN GIMBAL DESIGN

- All functions are fully automatic or manual
- Solid aluminium gimbal construction
- Pivot ball-bearings



DRIVE: DC-MOTOR / BELT

- Optical speed control at the motor
- Rubber mountings for vibration decoupling
- Precision cut belt for lower wow & flutter



BLUETOOTH: UNCOMPLICATED WITH COMFORT

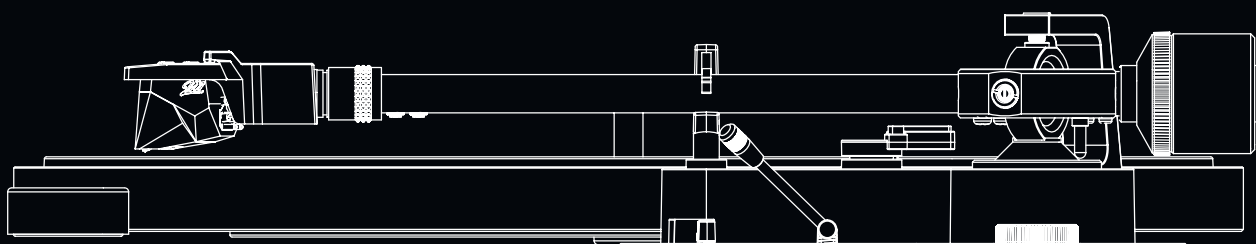
- Bluetooth audio signal to speakers, headphones or integrated systems
- Maximum comfort. Remote control of functions via app
- App for Android and iOS



DUAL TECHNICAL DATA

DUAL CS 529

MOTOR		PLATTER	
Drive	Belt	Material	Aluminium die-cast
Speed settings	33/45/78	Mat	Rubber 2,5 mm
Wow & Flutter	< ±0,08 % (DIN WTD)	Bearing	Hardened steel spindle Brass bushing
		Diameter	305 mm
		Weight (incl. Mat)	850 g
TONEARM		PLINTH	
Auto-Start/-Stop-Function	Bluetooth Remote Control / Automatic	Material	MDF, folded
Bearing	4 x ball-bearing / twin gimbal mounting	Surface finish	Vinyl veneer / Black Option: veneer Wallnut
Effective length	221,5 mm	Feet	Ø 62 mm / Elastomer
Offset Angle	25,6°	Connection	RCA socket
Overhang	19 mm	Connection to Phono Input	✓
Type	statically balanced	Connection to Line Input	✓
Stylus Pressure Range	0 bis 4 g	Digital Output	Bluetooth
Cartridge Weight Range	5 g bis 9 g	Dimension, closed dustcover	435 x 367 x 145 mm
Factory installed pick up	Ortofon 2M Red	Dimension, open dustcover	T: 415 mm / H: 400 mm
		Weight	6,7 kg



Dual

Dual

**5 YEAR
WARRANTY**

