

## Specifications

PLANAR DESIGN

DRIVER UNITS:

CUSTOM PLANAR DRIVER

2 MICRON DIAPHRAGM

SPL: 94dB @ 54.0 mVRMS

EARPHONE IMPEDANCE: 15.5 OHM @ 1K

FREQUENCY RESPONSE: 5HZ - 20KHZ

EARPHONE CONNECTOR: BERYLLIUM COPPER MMCX

## Accessories

CAMPFIRE AUDIO EARPHONE CABLE

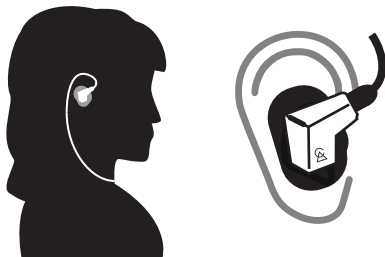
(VARIOUS TERMINATIONS AVAILABLE)

EARPHONE CLEARING TOOL, CAMPFIRE AUDIO PIN  
CAMPFIRE AUDIO PREMIUM BLACK LEATHER ZIPPER CASE

## Warranty

SUPERMOON INCLUDES A 2 YEAR LIMITED LIABILITY  
PRODUCT WARRANTY COVERING DEFECTS DUE TO  
MANUFACTURING AND ASSEMBLY.  
FOR MORE INFORMATION VISIT  
[CAMPFIREAUDIO.COM/WARRANTY](http://CAMPFIREAUDIO.COM/WARRANTY)

## Fit Guide



INSERT SUPERMOON INTO YOUR EAR WITH THE CABLE  
EXITING FORWARD ALLOWING IT TO WRAP EASILY  
ABOVE AND BEHIND YOUR EAR. THE EARPHONES ARE  
CUSTOM FIT FOR YOUR EARS. USE THE CABLE  
MARKERS AS A GUIDE - RED = RIGHT / BLUE =  
LEFT.



DESIGNED AND HAND ASSEMBLED  
IN PORTLAND, OREGON USA  
USING GLOBALLY SOURCED COMPONENTS

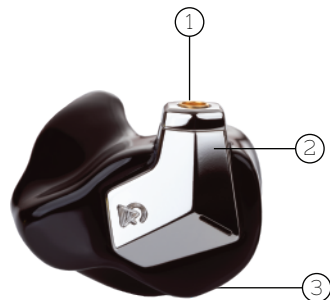
CAMPFIRE  
AUDIO

SUPERMOON

VISIT US AT [CAMPFIREAUDIO.COM](http://CAMPFIREAUDIO.COM)

CAMPFIRE AUDIO® NAMES AND LOGOS ARE  
PROTECTED BY US COPYRIGHT

# SUPERMOON



- ① BERYLLIUM COPPER MMCX
- ② STAINLESS STEEL CAPTURE
- ③ SOLID BODY CONSTRUCTION

IEM-SMN

## Use Instructions

TO REMOVE YOUR EARPHONE CABLE;  
PULL CABLE IN THE DIRECTION PARALLEL TO THE EARPHONE CONNECTOR. AVOID PULLING THE CABLE AT AN ANGLE, AS THIS CAN DAMAGE THE MMCX CONNECTORS OF THE CABLE AND/OR THE EARPHONES.

TAKE CARE NOT TO DROP YOUR EARPHONES. EACH CAMPFIRE AUDIO EARPHONE HOLDS A SENSITIVE AND FINELY TUNED TRANSDUCER. SUDDEN SHOCKS OR IMPACT TO THE SHELL CAN POTENTIALLY CAUSE DAMAGE OR ALTER THE PERFORMANCE OF THE EARPHONE'S TRANSDUCER.

DAMAGE TO THE EARPHONE TRANSDUCERS (DRIVERS) ARE NOT COVERED UNDER THE EARPHONE'S WARRANTY PROTECTION AND ARE SUBJECT TO A REASONABLE FEE FOR REPAIR.



## Care Instructions

TAKE SPECIAL CARE TO KEEP THE EARPHONE OPENINGS CLEAR OF DEBRIS AND WAX. CAREFULLY USE THE CLEARING TOOL INCLUDED WITH YOUR EARPHONES TO REMOVE BUILD UP FROM THE EARPHONE. TAKE EXTRA CARE NOT TO PUSH ANY FOREIGN OBJECTS INTO THE CANAL OF THE EARPHONE OPENINGS. AVOID MOISTURE BUILD UP ON THE SURFACE AND IN THE INTERIOR OF THE EARPHONE BODY.

OPENING THE CASE OF THE EARPHONE WILL DAMAGE THE SEAL OF THE SHELL AND ALTER THE PRECISION TUNING OF YOUR EARPHONE. TAMPERING, OPENING, OR ALTERING THE SHELL WILL VOID THE WARRANTY OF YOUR EARPHONE.

NOTE THAT EXTENDED LISTENING PERIODS AT HIGH LISTENING LEVELS CAN NEGATIVELY IMPACT YOUR HEARING OVER TIME. PLEASE ENJOY YOUR EARPHONES RESPONSIBLY.

QUESTIONS OR COMMENTS? PLEASE CONTACT US:  
SUPPORT@CAMPFIREAUDIO.COM

THANK YOU FOR PURCHASING SUPERMOON.  
NICELY DONE.

