

SA legend 7.2 & SA legend 7.2 silverback

Manual in english
Brugsanvisning på dansk

vers. 3 International





Welcome

Thank you for choosing SA. At System Audio, we want to excite people with amazing audio experiences. To get the most out of your new speakers, I recommend that you carefully read this guide before connecting your new SA speakers. Feel free to contact us if you have any questions.

Velkommen

Tak, fordi du har valgt SA. Hos System Audio vil vi begejstre mennesker med fantastiske lydoplevelser. For at få det bedste udbytte af dine nye højttalere, vil jeg anbefale at du omhyggeligt læser denne vejledning, før du tilslutter dine nye SA-højttalere. Du er velkommen til at kontakte os, hvis du er i tvivl om noget.

Ole Witthøft, founder

Inside the box

SA legend 7.2

1 x SA legend 7.2
2 x front grilles
4 x rubber feet

SA legend 7.2 silverback:

1 x SA legend 7.2 silverback
1 x power cable
1 x adaptor
2 x front grilles
4 x rubber feet

Rubber feet in plastic bag

Emballagens indhold

SA legend 7.2

1 x SA legend 7.2
2 x stoffronter
4 x gummifødder

SA legend 7.2 silverback:

1 x SA legend 7.2 silverback
1 x strøm kabel
1 x adaptor
2 x stoffronter
4 x gummifødder

Gummifødderne er placeret i en pose.

Good to know about your new speaker

Warranty

System Audio A/S provides a 2-year warranty against production defects and a 7-year warranty on drive units and passive crossovers by registering at www.system-audio.com. The warranty does not cover abuse or electronic circuits. Repairs and service are performed by the dealer or affiliated service workshops. Any changes to the design will void the warranty.



Burning-in your new speaker

Your speaker need a 50 hour burn-in period and have to play music for a few days to get the sound right:

Note:

- * The better the equipment in your system, the better the speaker will sound.
- * Good cables improve sound
- * Spend time experimenting with speaker placement
- * Never turn up the volume to a level where the sound is not clean
- * Remove front grilles for best quality

Godt at vide om din nye højttaler

Garanti

System Audio A/S yder 2 års garanti mod produktionsfejl og 7 års garanti på højttalerenheder og delefilter ved registrering på www.system-audio.com. Garantien dækker ikke misbrug og elektroniske kredsløb. Reparationer og service udføres af forhandleren eller tilknyttede serviceværksteder. Eventuelle ændringer i konstruktionen vil annullere garantien.



Tilspilning af nye højttalere

Dine højttalere har brug for en vis tilspilningsperiode og skal spille musik gennem nogle dage, for at lyden bliver helt rigtig:

Bemærk:

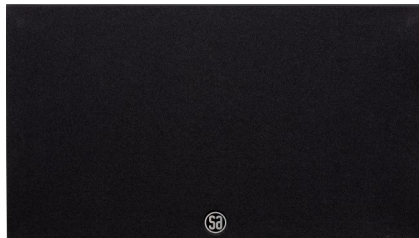
- * Jo bedre udstyr du bruger, jo bedre vil højttalerne lyde.
- * Gode kabler forbedrer lyden
- * Brug tid på at eksperimentere med højttalernes placering
- * Skru aldrig volumen op til et niveau, hvor lyden ikke er ren
- * Fjern stoffronten for bedst mulig kvalitet

Place your speaker as you like

Decide whether you want to place your speaker horizontally or vertically. Speakers sound their best when they are placed in height with your ears

Placer din højttaler, som du vil

Bestem, om din højttaler skal hænge vandret eller lodret. Højttalerne lyder bedst, når de er placeret i ørehøjde.

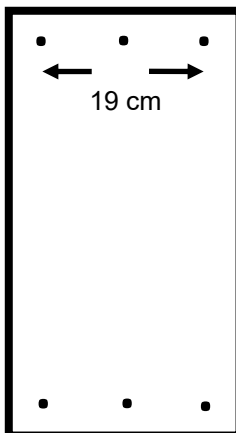
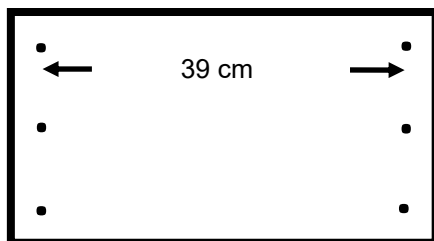


Hang your speaker on the wall

Fit two screws into the wall at a distance that fits the way you want to hang the speaker. If you want put rubber feet on the back of the speaker to make room for the cable.

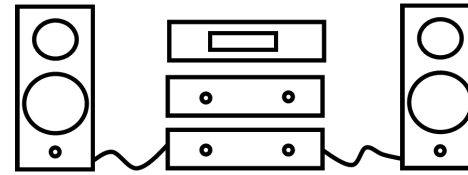
Hæng din højttaler på væggen

Monter to skruer i væggen med en afstand, der passer til den måde, du vil hænge højttaleren op på. Sæt eventuelt selvklæbende gummifødder på bagsiden af højttaleren, for at give plads til kablet.

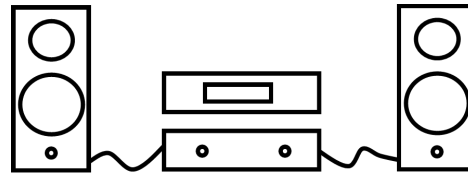


Special for SA legend 7.2

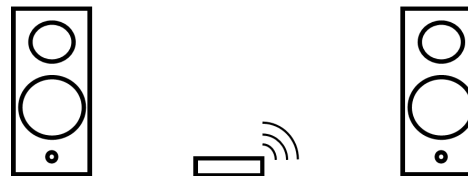
Upgrade your speaker



Your SA legend speakers can be upgraded to digital active speakers, called SA legend silverback



SA legend silverback are digital active speakers. They are used in music systems or home theatres with a pre-amplifier. Speakers are available to buy in this version. They can be upgraded to digital active wireless speakers



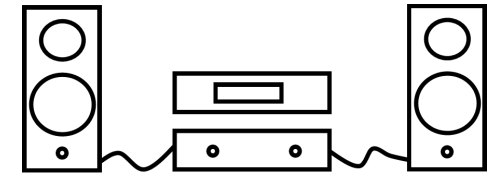
SA legend silverback w. hub are digital active wireless speakers. They can be used with a smartphone, tablet, TV, CD, turntable etc. It is a complete music system. Speakers can be purchased in this version. They can be upgraded (with a 7.1hub) to take part of a (up to) 7.1 wireless digital home theatre

Specielt for SA legend 7.2

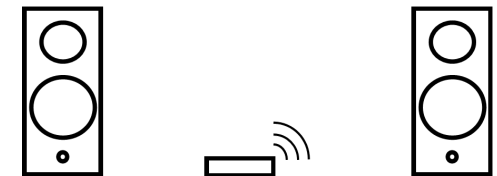
Opgrader dine højttaler



Dine SA legend højttalere kan opgraderes til digitale aktive højttalere med navnet SA legend silverback



SA legend silverback er digitale aktive højttalere. Brug dem, i et musiksystem eller en hjemmebiograf og tilslut dem din for-forstærker. Du kan købe højttalerne i denne version. De fungerer ydermere som trådløse højttalere



SA legend silverback med hub er trådløse højttalere. De fungerer med din smartphone, tablet, TV, CD, pladespiller osv. De er et komplet musiksystem. Højttalerne kan købes færdigt i denne version. Med en 7.1 hub er de forberedt til at tage en hvilken som helst plads i en 7.1 trådløs digital hjemmebiograf

Operating SA legend 7.2 silverback

Connect the speaker with an analog signal cable or a WiSA hub.
(For detailed use with a WiSA hub see the user guide)

When connected to a WiSA hub. You can change the placement of the speaker by pushing the small connect button on the back of the speaker.

To enter connect mode, press-and-hold button for 2 seconds.

When connected to a hub, the wireless LED indicator will light up.
To connect to another transmitter/hub press-and-hold button for 2 seconds.

When wireless LED indicator is flashing the speaker is searching for a WiSA hub.

To disconnect the speaker from the hub, press the connect button for 2 seconds. The Wireless LED will start to flash.

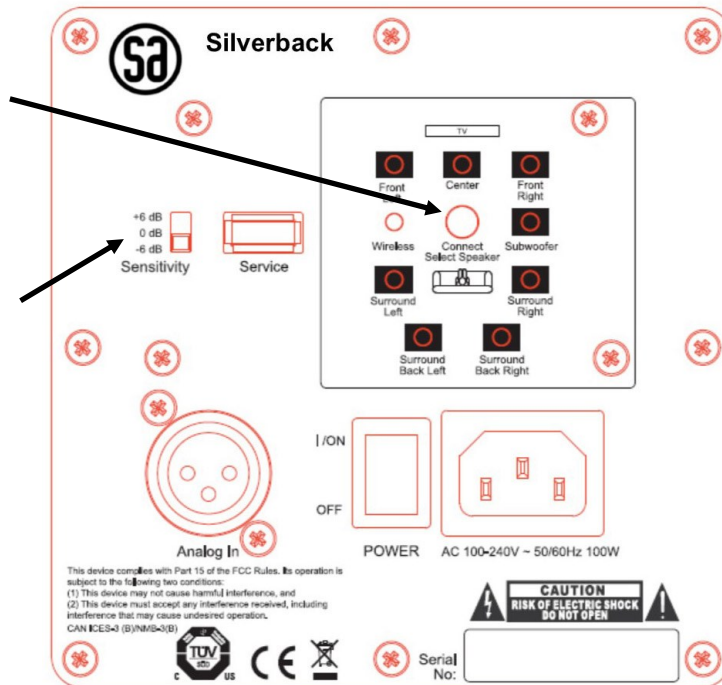
Button

For connecting and selecting speaker position

Sensitivity

Adjustment of analog input.
If sound is distorted = decrease sensitivity 6 dB.

If sound level too weak = increase sensitivity 6dB.



Technical specifications

WiSA receiver
1 analog XLR input
Auto-sense

Important Safety Instructions

1. Read these instructions.
2. Keep these instructions.
3. Heed all warnings.
4. Follow all instructions.
5. Do not use this apparatus near water.
6. Clean only with dry cloth.
7. Do not block any ventilation openings. Install in accordance with instructions.
8. Do not install near any heat sources such as radiators, heat registers, stoves, or other apparatus (including amplifiers) that produce heat.
9. Do not defeat the safety purpose of the polarized or grounding-type plug. A polarized plug has two blades with one wider than the other. A grounding type plug has two blades and a third grounding prong. The wide blade or the third prong are provided for your safety. If the provided plug does not fit into your outlet, consult an electrician for replacement of the obsolete outlet.
10. Protect the power cord from being walked on or pinched particularly at plugs, convenience receptacles, and the point where they exit from the apparatus.
11. Only use attachments/accessories specified by System Audio.
13. Unplug this apparatus during lightning storms or when unused for long periods of time.
14. Refer all servicing to qualified service personnel. Servicing is required when the

apparatus has been damaged in any way, such as power-supply cord or plug is damaged, liquid has been spilled or object have fallen into the apparatus, the apparatus has been exposed to rain or moisture, does not operate normally, or has been dropped.

15. Where the MAINS plug or an appliance coupler is used as the disconnect device, the disconnect device shall remain readily operable.
16. A warning that apparatus with class I construction shall be connected to a MAINS socket outlet with a protective earthing connection

WARNING: To reduced the risk of fire or electric shock, do not expose this apparatus to rain or moisture. The apparatus shall not be exposed to dripping or splashing and that no objects filled with liquids, such as vases, shall be placed on the apparatus.

The wireless Silverback module connects with a WiSA hub and Silverback will play as receiver.

The network standby power of Silverback is less than 2W, after 20 mins. There is no general stand-by power consumption for the Silverback amplifier.