

— **891** Let's get started... —



M O O N

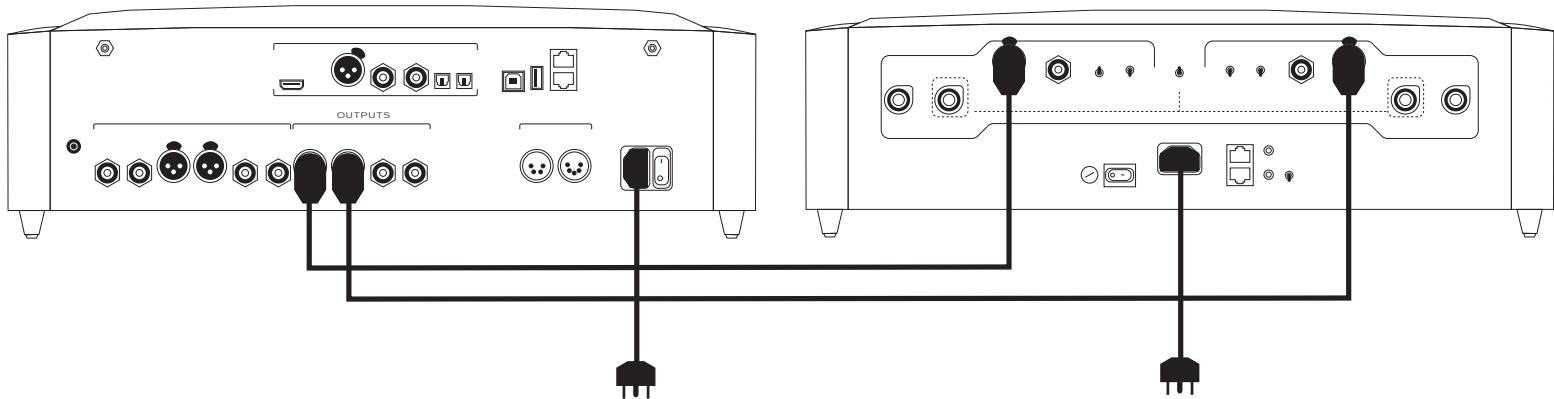
by SIMAUDIO

1 Connecting

Use interconnect cables to connect source devices to the appropriate INPUT connectors.

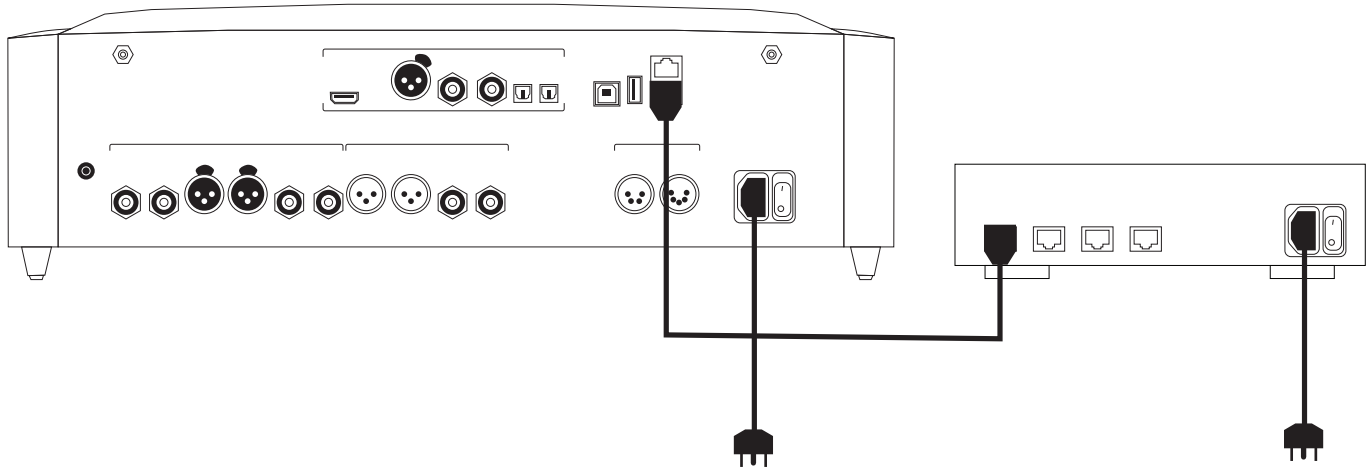
Use interconnect cables to connect the OUTPUT connectors to amplifiers.

Connect the supplied power cable between the IEC connector and an electrical outlet.



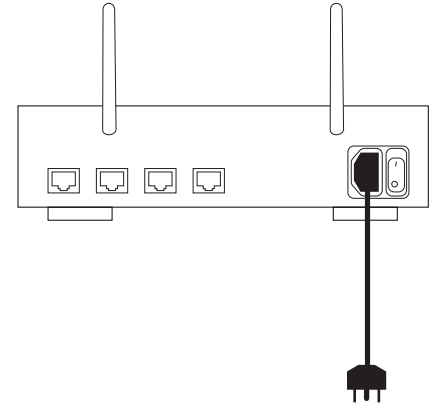
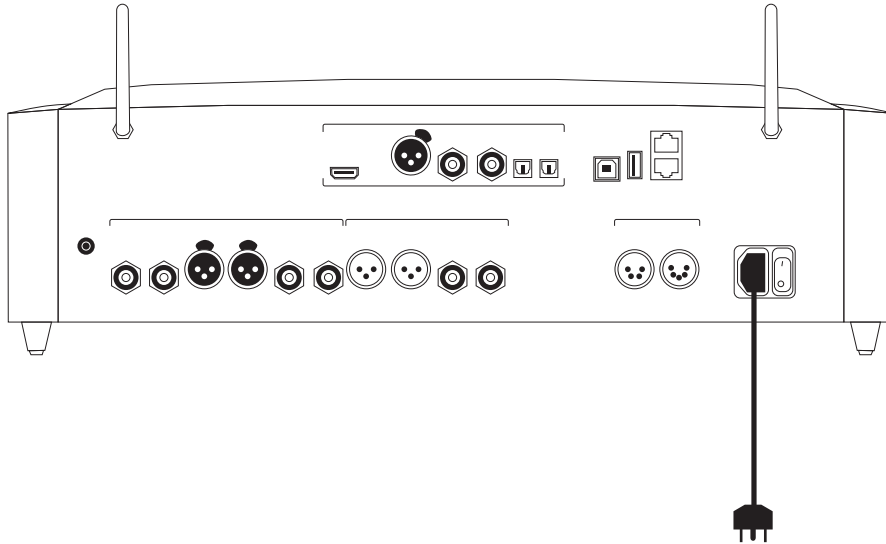
2 | Connecting – Network (Wired)

Use Ethernet cable to connect the device to a network router.



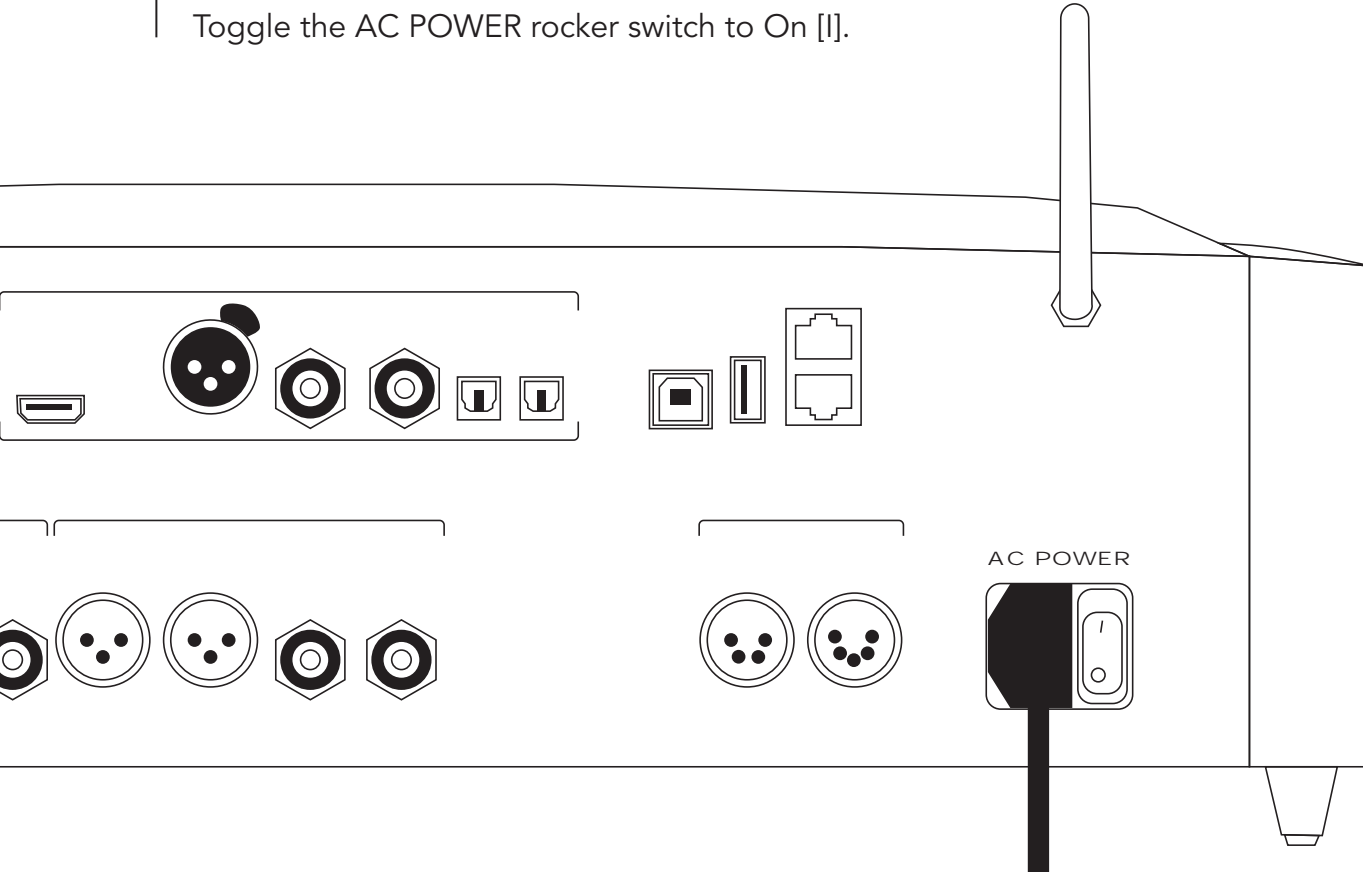
3 Connecting – Network (Wireless)

Screw the Wi-Fi antennas to the corresponding terminals.
Ensure that Ethernet cables are not connected.



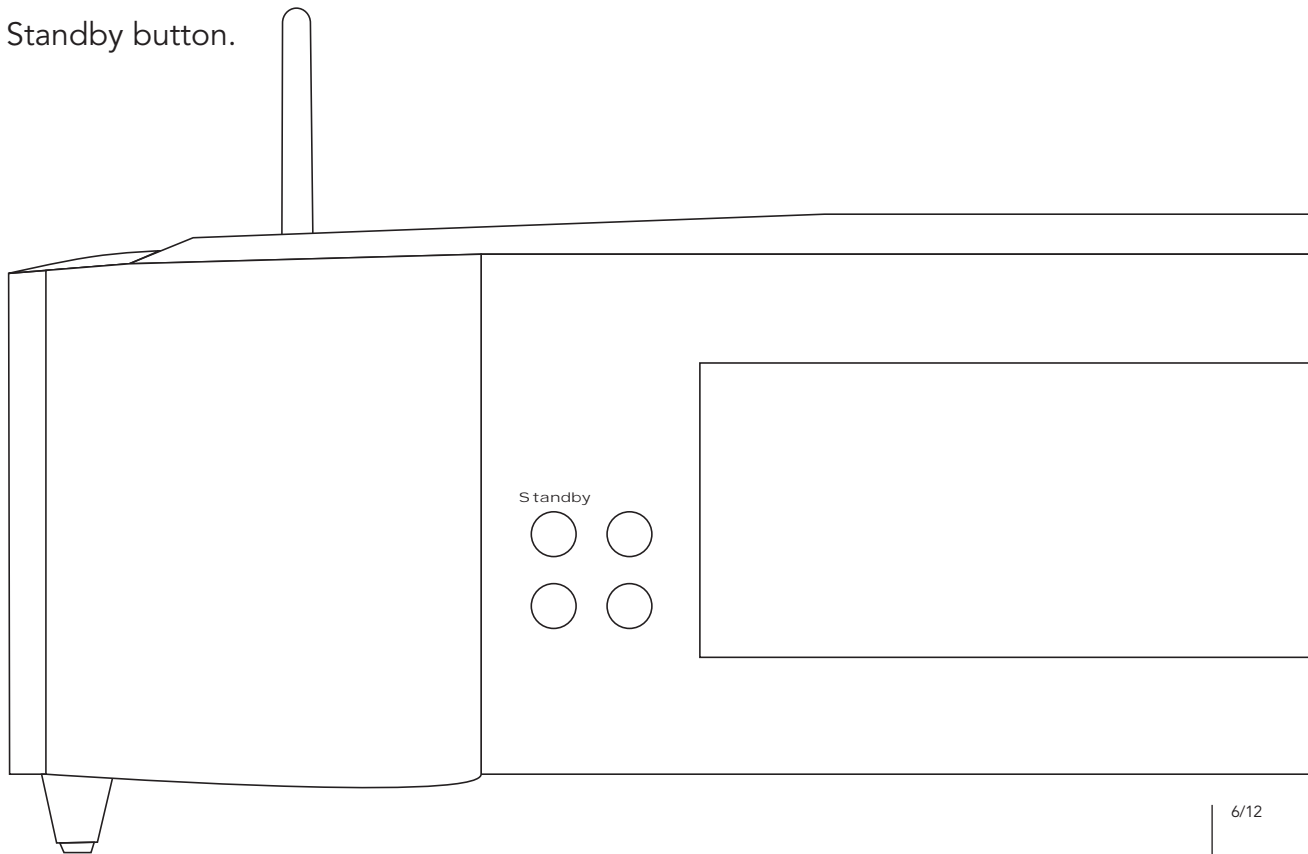
4 | Starting – Power

Toggle the AC POWER rocker switch to On [I].



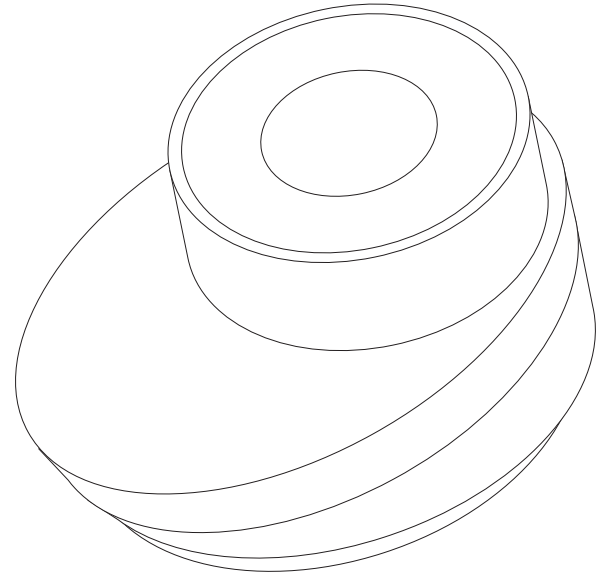
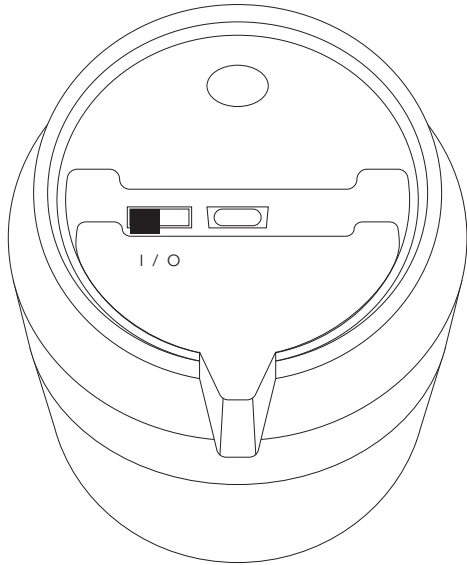
5 | Starting – Standby

Press the Standby button.



6 | Pairing – BRM-1

Toggle the slider switch to On [I]. Only switch Off the device when shipping.
Use the volume knob on the preamp to highlight "Link" and the OK button to select it.

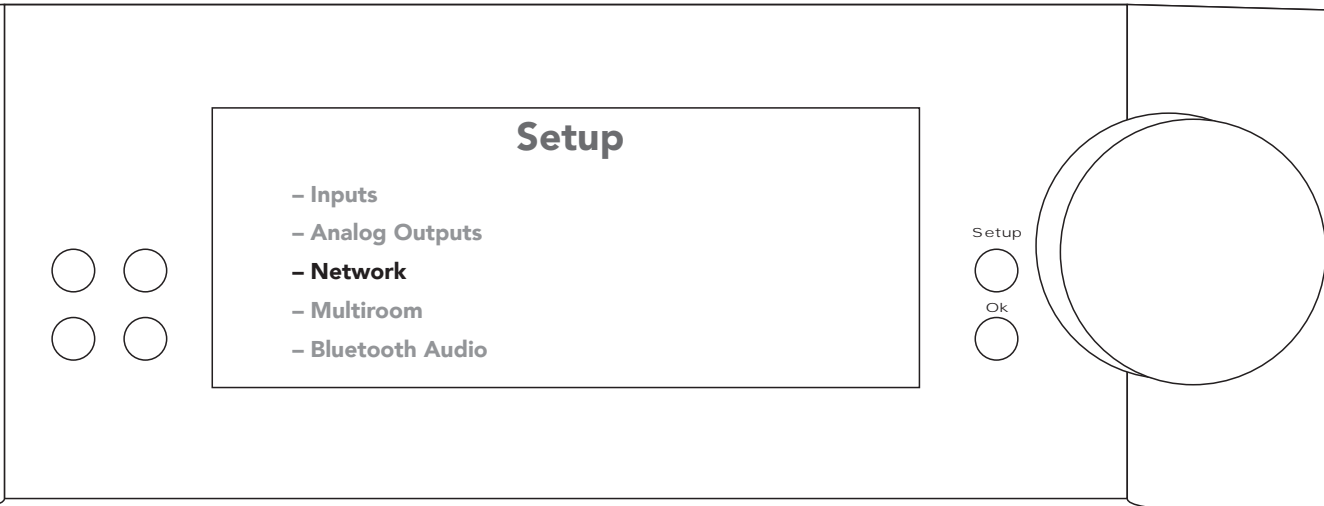


If a "Link" prompt does not appear on the 791, touch the BRM-1 display.

7 | Setting Up – Wi-Fi

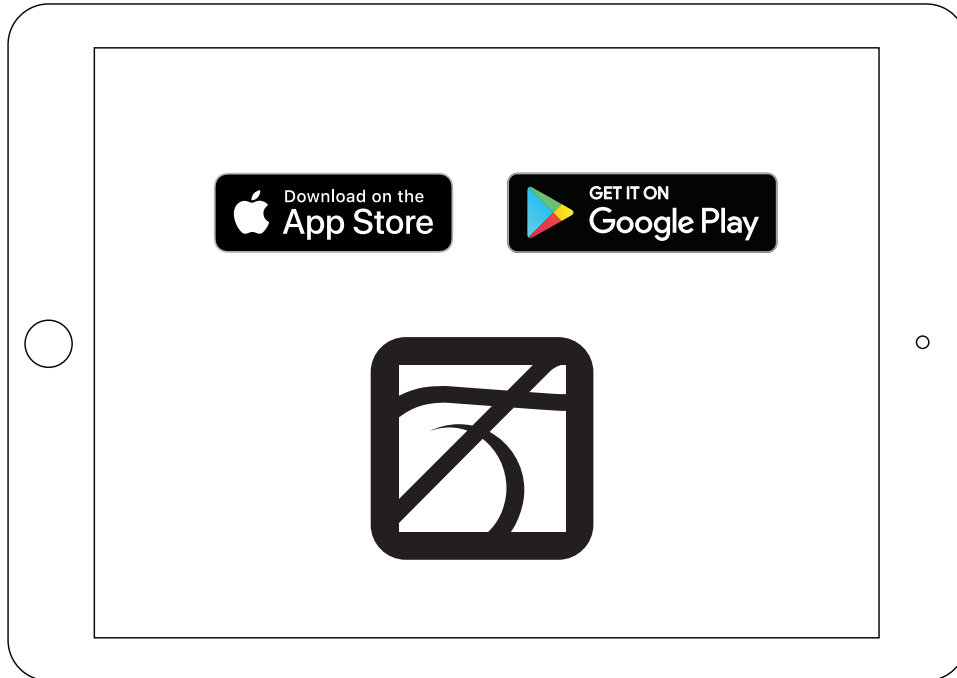
Press the Setup button. Use the volume knob and OK button...

1. Select: Network → Configuration → Wi-Fi Parameters → Automatic
2. Select the name of the Wi-Fi (SSID) from the list, or Manual if it does not appear.
3. Enter the Wi-Fi password (Security Key).



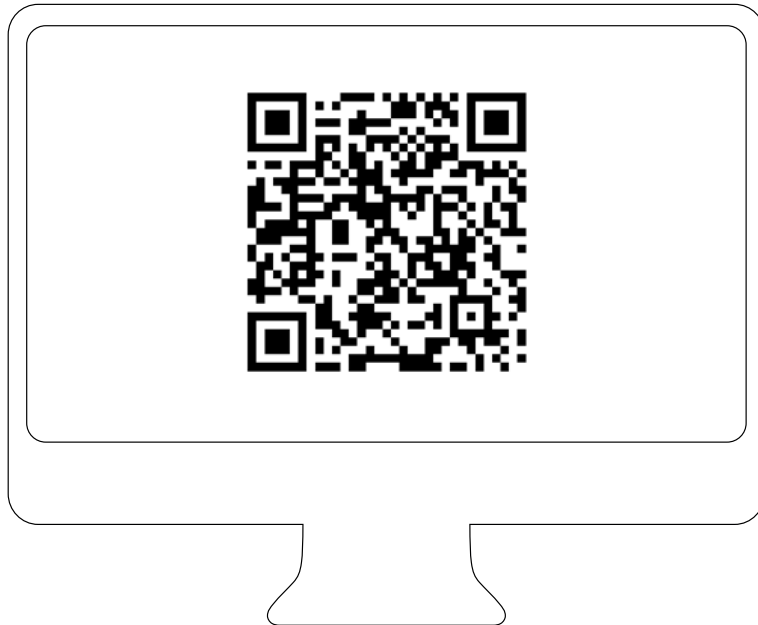
8 | Controlling – MiND Controller

Download the MOON MiND Controller app.



9 | Discovering – Website

To view the User Manual, download the USB Audio driver, and for more information about this product, visit our website: simaudio.com



N O Ū R T H
COLLECTION

M O O N

by SIMAUDIO